

Datasheet for ABIN1323846
TSC1 Protein (AA 166-274) (GST tag)



[Go to Product page](#)

1 Image

Overview

Quantity:	10 µg
Target:	TSC1
Protein Characteristics:	AA 166-274
Origin:	Human
Source:	Wheat germ
Protein Type:	Recombinant
Purification tag / Conjugate:	This TSC1 protein is labelled with GST tag.
Application:	ELISA, Western Blotting (WB), Antibody Array (AA), Affinity Purification (AP)

Product Details

Purpose:	TSC1 (Human) Recombinant Protein (Q01)
Sequence:	LKKPGHVAEV YLVHLHASVY ALFHRLYGMV PCNFVSFLRS HYSMKENLET FEEVVKPMME HVRIHPELVT GSKDHELDPR RWKRLETHDV VIECAKISLD PTEASYEDG
Characteristics:	Human TSC1 partial ORF (NP_000359, 166 a.a. - 274 a.a.) recombinant protein with GST-tag at N-terminal.
Purification:	in vitro wheat germ expression system

Target Details

Target:	TSC1
Alternative Name:	TSC1 (TSC1 Products)

Target Details

Background: Full Gene Name: tuberous sclerosis 1
Synonyms: KIAA0243,LAM,MGC86987,TSC

Gene ID: 7248

NCBI Accession: [NM_000368](#)

Pathways: [RTK Signaling](#), [AMPK Signaling](#), [Regulation of Cell Size](#), [Tube Formation](#)

Application Details

Application Notes: Optimal working dilution should be determined by the investigator.

Comment: Preparation method: in vitro, wheat germ expression system
Product Quality tested by: 12.5% SDS-PAGE Stained with Coomassie Blue.

Restrictions: For Research Use only

Handling

Buffer: 50 mM Tris-HCl, 10 mM reduced Glutathione, pH =8.0 in the elution buffer.

Handling Advice: Aliquot to avoid repeated freezing and thawing.

Storage: -80 °C

Storage Comment: Best use within three months from the date of receipt of this protein.

Images

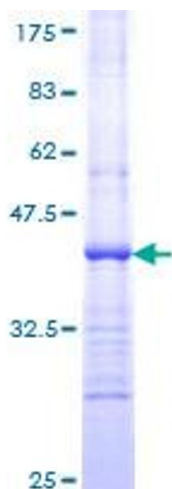


Image 1.