



[Go to Product page](#)

Datasheet for ABIN1323848

## Tuberin Protein (AA 540-658) (GST tag)

### 1 Image

#### Overview

Quantity:	10 µg
Target:	Tuberin (TSC2)
Protein Characteristics:	AA 540-658
Origin:	Human
Source:	Wheat germ
Protein Type:	Recombinant
Purification tag / Conjugate:	This Tuberin protein is labelled with GST tag.
Application:	Antibody Array (AA), Affinity Purification (AP), ELISA, Western Blotting (WB)

#### Product Details

Purpose:	TSC2 (Human) Recombinant Protein (Q01)
Sequence:	SPPPELEERD VAAYSASLED VKTAVLGLLV ILQTKLYTLP ASHATRUYEM LVSHIQLHYK HSYTLPIASS IRLQAFDFLF LLRADSLHRL GLPNKDGVVR FSPYCVCDYM EPERGSEKK
Characteristics:	Human TSC2 partial ORF ( NP_000539, 540 a.a. - 658 a.a.) recombinant protein with GST-tag at N-terminal.
Purification:	in vitro wheat germ expression system

#### Target Details

Target:	Tuberin (TSC2)
Alternative Name:	TSC2 ( <a href="#">TSC2 Products</a> )

## Target Details

Background:	Full Gene Name: tuberous sclerosis 2 Synonyms: FLJ43106,LAM,TSC4
Gene ID:	7249
NCBI Accession:	<a href="#">NM_000548</a>
Pathways:	<a href="#">RTK Signaling</a> , <a href="#">AMPK Signaling</a> , <a href="#">Fc-epsilon Receptor Signaling Pathway</a> , <a href="#">EGFR Signaling Pathway</a> , <a href="#">Neurotrophin Signaling Pathway</a> , <a href="#">Regulation of Cell Size</a> , <a href="#">Tube Formation</a> , <a href="#">Protein targeting to Nucleus</a>

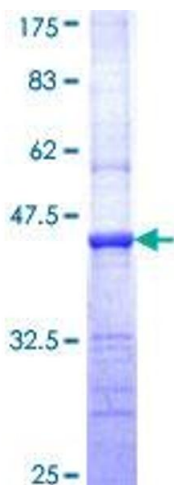
## Application Details

Application Notes:	Optimal working dilution should be determined by the investigator.
Comment:	Preparation method: in vitro, wheat germ expression system Product Quality tested by: 12.5% SDS-PAGE Stained with Coomassie Blue.
Restrictions:	For Research Use only

## Handling

Buffer:	50 mM Tris-HCl, 10 mM reduced Glutathione, pH =8.0 in the elution buffer.
Handling Advice:	Aliquot to avoid repeated freezing and thawing.
Storage:	-80 °C
Storage Comment:	Best use within three months from the date of receipt of this protein.

## Images



**Image 1.**