

Datasheet for ABIN1323894
TSKS Protein (AA 1-589) (GST tag)



[Go to Product page](#)

1 Image

Overview

Quantity:	10 µg
Target:	TSKS
Protein Characteristics:	AA 1-589
Origin:	Human
Source:	Wheat germ
Protein Type:	Recombinant
Purification tag / Conjugate:	This TSKS protein is labelled with GST tag.
Application:	ELISA, Western Blotting (WB), Antibody Array (AA), Affinity Purification (AP)

Product Details

Purpose:	TSKS (Human) Recombinant Protein (P01)
Sequence:	MASVVVKTIW QSKEIHEAGD TPTGVESCSQ LVPEAPRRVT SRAKGIPKKK KAVSFHGVPEP QMSHQPMHWC LNLKRSSACT NVSLLNLAAM EPTDSTGTDS TVEDLSGQLT LAGPPASPTL PWDPDDADIT EILSGVNSGL VRAKDSITSL KEKTNRVNQH VQSLQSECSV LSENLERRRQ EAEELEGYCI QLKENCWKVT RSVEDAEIKT NVLKQNSALL EEKRLRYLQQQ LQDETPRRQE AELQEPEEKQ EPEEKQEPEE KQKPEAGLSW NSLGPAATSQ GCPGPPGSPD KPSRPHGLVP AGWGMGPRAG EGPYVSEQEL QKLFTGIEEL RREVSSLTAR WHQEEGAVQE ALRLLGGLGG RVDGFLGQWE RAQREQAQTAR DLQELRGRA DELCTMVERS AVSVASLRSE LEGLGPLKPI LEEFGRQFQN SRRGPDLSMN LDRSHQGNCA RCASQGSQLS TESLQQLLDR ALTSLVDEVK QRGLTPACPS CQRLHKKILE LERQALAKHV RAEALSSTLR LAQDEALRAK NLLLTDKMKP EEKMATLDHL HLKMCSLHDH LSNLPLEGST GTMGGGSSAG TPPKQGGSA
Characteristics:	Human TSKS full-length ORF (AAH58862.1, 1 a.a. - 589 a.a.) recombinant protein with GST-tag

Product Details

at N-terminal.

Purification: in vitro wheat germ expression system

Target Details

Target: TSKS

Alternative Name: TSKS ([TSKS Products](#))

Background: Full Gene Name: testis-specific kinase substrate
Synonyms: TSKS1

Gene ID: 60385

Pathways: [Toll-Like Receptors Cascades](#)

Application Details

Application Notes: Optimal working dilution should be determined by the investigator.

Comment: Preparation method: in vitro, wheat germ expression system
Product Quality tested by: 12.5% SDS-PAGE Stained with Coomassie Blue.

Restrictions: For Research Use only

Handling

Buffer: 50 mM Tris-HCl, 10 mM reduced Glutathione, pH =8.0 in the elution buffer.

Handling Advice: Aliquot to avoid repeated freezing and thawing.

Storage: -80 °C

Storage Comment: Best use within three months from the date of receipt of this protein.

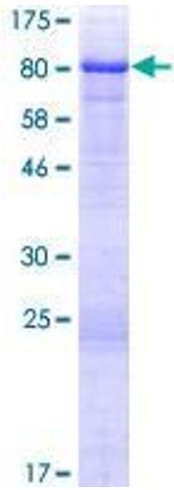


Image 1.