

Datasheet for ABIN1323961

TSPY-Like 3 Protein (TSPYL3) (AA 1-355) (GST tag)



[Go to Product page](#)

1 Image

Overview

Quantity:	10 µg
Target:	TSPY-Like 3 (TSPYL3)
Protein Characteristics:	AA 1-355
Origin:	Human
Source:	Wheat germ
Protein Type:	Recombinant
Purification tag / Conjugate:	This TSPY-Like 3 protein is labelled with GST tag.
Application:	Antibody Array (AA), Affinity Purification (AP), ELISA, Western Blotting (WB)

Product Details

Purpose:	TSPYL3 (Human) Recombinant Protein (P01)
Sequence:	MADKRAGTPE AAARPPPGLA REGDARTVPA ARAREAGGRG SLHPAAGPGT AFPSPPGRGEA ASTATTPSLE NGRVRDEAPE TCGAEGLGTR AGASEKAEDA NKEEGAIFKK EPAEEVEKQQ EGEEKQEVAA EAQEGPRLLN LGALIVDPLE AIQWEAEAVS AQADRAYLPL ERRFGRMHRL YLARRSFIIQ NIPGFVWTAF LNHPQLSAMI SPRDEDMLCY LMNLEVRELR HSRTGCKFKF RFWSNPYFQN KVIVKEYEQR ASGRVVSIAI RIRWHWGQEP PALVHRNRDT VRSFFSWFSQ HSLPEADRVA QIIKDDLWPN PLQYLLGDR PCRARGGLAR WPTETPSRPY GFQSG
Characteristics:	Human TSPYL3 full-length ORF (AAI01557.1, 1 a.a. - 355 a.a.) recombinant protein with GST-tag at N-terminal.
Purification:	in vitro wheat germ expression system

Target Details

Target:	TSPY-Like 3 (TSPYL3)
Alternative Name:	TSPYL3 (TSPYL3 Products)
Background:	Full Gene Name: TSPY-like 3 (pseudogene) Synonyms: MGC126605,MGC126607,bA392M18.1
Gene ID:	128854

Application Details

Application Notes:	Optimal working dilution should be determined by the investigator.
Comment:	Preparation method: in vitro, wheat germ expression system Product Quality tested by: 12.5% SDS-PAGE Stained with Coomassie Blue.
Restrictions:	For Research Use only

Handling

Buffer:	50 mM Tris-HCl, 10 mM reduced Glutathione, pH =8.0 in the elution buffer.
Handling Advice:	Aliquot to avoid repeated freezing and thawing.
Storage:	-80 °C
Storage Comment:	Best use within three months from the date of receipt of this protein.

Images

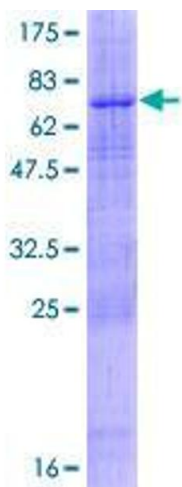


Image 1.