



[Go to Product page](#)

Datasheet for ABIN1323964

TSPY-Like 6 Protein (TSPYL6) (AA 1-410) (GST tag)

1 Image

Overview

Quantity:	25 µg
Target:	TSPY-Like 6 (TSPYL6)
Protein Characteristics:	AA 1-410
Origin:	Human
Source:	Wheat germ
Protein Type:	Recombinant
Purification tag / Conjugate:	This TSPY-Like 6 protein is labelled with GST tag.
Application:	ELISA, Western Blotting (WB), Antibody Array (AA), Affinity Purification (AP)

Product Details

Purpose:	TSPYL6 (Human) Recombinant Protein (P01)
Sequence:	MSLPESPHSP ATLDYALEDP HQGQRSREKS KATEVMADMF DGRLEPIVFP PPRLPEEGVA PQDPADGGHT FHILVDAGRS HGAIKAGQEV TPPPAEGLEA ASASLTTDSS LKNGFPGEET HGLGGEKALE TCGAGRSESE VIAEGKAEDV KPEECAMFSA PVDEKPGGEE MDVAEENRAI DEVNREAGPG PGPGPLNVGL HLNPLESIQL ELDSVNAEAD RALLQVERRF GQIHEYYLEQ RNDIICNIPG FWVTAFRHHP QLSAMIRGQD AEMLSYLTNL EVKELRHPRT GCKFKFFFQR NPYFRNKLIV KVYEVRSFGQ VVSFSTLIMW RRGHGPQSFI HRNRHVICSF FTWFSDHSLP ESDRIAQIIK EDLWSNPLQY YLLGEDAHRA RRRLVREPVE IPRPFGFQCG
Characteristics:	Human TSPYL6 full-length ORF (NP_001003937.1, 1 a.a. - 410 a.a.) recombinant protein with GST-tag at N-terminal.
Purification:	in vitro wheat germ expression system

Target Details

Target:	TSPY-Like 6 (TSPYL6)
Alternative Name:	TSPYL6 (TSPYL6 Products)
Background:	Full Gene Name: TSPY-like 6 Synonyms: DKFZp434B125
Gene ID:	388951
NCBI Accession:	NM_001003937

Application Details

Application Notes:	Optimal working dilution should be determined by the investigator.
Comment:	Preparation method: in vitro, wheat germ expression system Product Quality tested by: 12.5% SDS-PAGE Stained with Coomassie Blue.
Restrictions:	For Research Use only

Handling

Buffer:	50 mM Tris-HCl, 10 mM reduced Glutathione, pH =8.0 in the elution buffer.
Handling Advice:	Aliquot to avoid repeated freezing and thawing.
Storage:	-80 °C
Storage Comment:	Best use within three months from the date of receipt of this protein.

Images

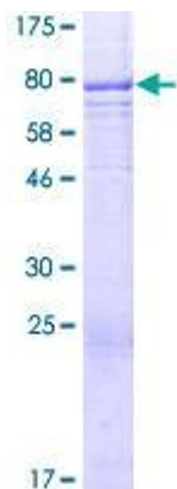


Image 1.