



[Go to Product page](#)

Datasheet for ABIN1324007

## TTC23L Protein (AA 1-361) (GST tag)

### 1 Image

#### Overview

Quantity:	10 µg
Target:	TTC23L
Protein Characteristics:	AA 1-361
Origin:	Human
Source:	Wheat germ
Protein Type:	Recombinant
Purification tag / Conjugate:	This TTC23L protein is labelled with GST tag.
Application:	ELISA, Western Blotting (WB), Antibody Array (AA), Affinity Purification (AP)

#### Product Details

Purpose:	FLJ25439 (Human) Recombinant Protein (P01)
Sequence:	<p>MQASPIRIP T VSNDIDWDFC FRMSQQTEIP AHQQTDELYP TGGCGESEEE TKAKEKEKAI DCMSHPKEKL AQSQKKVAQL IKEKMNTQAN KELIRCVILS RIIFGDHHWK CARALANLAY GYLTLRGLPV QAKKHATSAK NTLTWTWKANT TSNKEKEEIL EALVKLYYTL GVAVLLQNRG REAYFNLQKA ERNMKELKEL YKGGVCELQV SENDLTLALG RASLAIHRLN LALAYFEKAI GDVIAAKGDR TSDLISLYEE AAQIEQLRRN HNQAIQYLQQ AHSVCVSLFT EVSPKTAEMS ALLAKAYAMS GEAQHRDAVE IYFIRSINAY RATLGSEDFE TLSTTEEFCK WLVQNGEKQD K</p>
Characteristics:	Human FLJ25439 full-length ORF ( AAH57775.1, 1 a.a. - 361 a.a.) recombinant protein with GST-tag at N-terminal.
Purification:	in vitro wheat germ expression system

## Target Details

Target:	TTC23L
Alternative Name:	TTC23L ( <a href="#">TTC23L Products</a> )
Background:	Full Gene Name: tetratricopeptide repeat domain 23-like Synonyms: FLJ25439
Gene ID:	153657

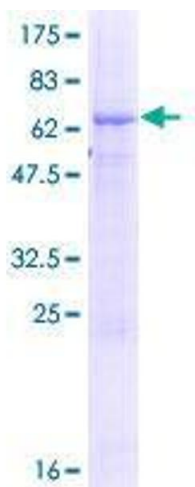
## Application Details

Application Notes:	Optimal working dilution should be determined by the investigator.
Comment:	Preparation method: in vitro, wheat germ expression system Product Quality tested by: 12.5% SDS-PAGE Stained with Coomassie Blue.
Restrictions:	For Research Use only

## Handling

Buffer:	50 mM Tris-HCl, 10 mM reduced Glutathione, pH =8.0 in the elution buffer.
Handling Advice:	Aliquot to avoid repeated freezing and thawing.
Storage:	-80 °C
Storage Comment:	Best use within three months from the date of receipt of this protein.

## Images



**Image 1.**