



[Go to Product page](#)

Datasheet for ABIN1324010

TTC26 Protein (AA 1-271) (GST tag)

1 Image

Overview

Quantity:	10 µg
Target:	TTC26
Protein Characteristics:	AA 1-271
Origin:	Human
Source:	Wheat germ
Protein Type:	Recombinant
Purification tag / Conjugate:	This TTC26 protein is labelled with GST tag.
Application:	ELISA, Western Blotting (WB), Antibody Array (AA), Affinity Purification (AP)

Product Details

Purpose:	TTC26 (Human) Recombinant Protein (P01)
Sequence:	MMLSRAPAV GRGVQHTDKR KKKGRKIPKL EELLSKRDFE GAITLLEFKR HVGEEEEEDTN LWIGYCAFHL GDYKRALEEY ENATKEENCN SEVWVNLACT YFFLGMKYQA EAAGFKASKS RLQNRLLFHL AHKFNDEKKL MSFHQNLQDV TEDQLSLASI HYMRSHYQEA IDIYKRILLD NREYLALNVY VALCYYKLDY YDVSQEVLA VYLQIPDSTI ALNLKACNHF RLYNGRAAEA ELKSLMDNAS SSFEFAKELI RHNLVNNDFP S
Characteristics:	Human TTC26 full-length ORF (AAH13912.1, 1 a.a. - 271 a.a.) recombinant protein with GST-tag at N-terminal.
Purification:	in vitro wheat germ expression system

Target Details

Target:	TTC26
Alternative Name:	TTC26 (TTC26 Products)
Background:	Full Gene Name: tetratricopeptide repeat domain 26 Synonyms: FLJ12571,MGC163211,dyf-13
Gene ID:	79989

Application Details

Application Notes:	Optimal working dilution should be determined by the investigator.
Comment:	Preparation method: in vitro, wheat germ expression system Product Quality tested by: 12.5% SDS-PAGE Stained with Coomassie Blue.
Restrictions:	For Research Use only

Handling

Buffer:	50 mM Tris-HCl, 10 mM reduced Glutathione, pH =8.0 in the elution buffer.
Handling Advice:	Aliquot to avoid repeated freezing and thawing.
Storage:	-80 °C
Storage Comment:	Best use within three months from the date of receipt of this protein.

Images

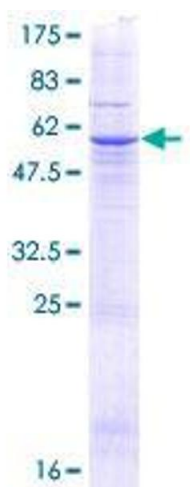


Image 1.