



[Go to Product page](#)

Datasheet for ABIN1324013

## TTC3 Protein (AA 1-110) (GST tag)

### 1 Image

#### Overview

Quantity:	10 µg
Target:	TTC3
Protein Characteristics:	AA 1-110
Origin:	Human
Source:	Wheat germ
Protein Type:	Recombinant
Purification tag / Conjugate:	This TTC3 protein is labelled with GST tag.
Application:	Antibody Array (AA), Affinity Purification (AP), ELISA, Western Blotting (WB)

#### Product Details

Purpose:	TTC3 (Human) Recombinant Protein (Q01)
Sequence:	MDNFAEGDFT VADYALLEDC PHVDDCVFAA EFMSNDYVRV TQLYCDGVG V QYKDYIQSER NLEFDICSIW CSKPISVLQD YCDAIKINIF WPLL FQH QNS SVISRLHPCV
Characteristics:	Human TTC3 partial ORF ( NP_003307, 1 a.a. - 110 a.a.) recombinant protein with GST-tag at N-terminal.
Purification:	in vitro wheat germ expression system

#### Target Details

Target:	TTC3
Alternative Name:	TTC3 ( <a href="#">TTC3 Products</a> )

## Target Details

Background:	Full Gene Name: tetratricopeptide repeat domain 3 Synonyms: DCRR1,DKFZp686M0150,RNF105,TPRDIII
Gene ID:	7267
NCBI Accession:	<a href="#">NM_003316</a>

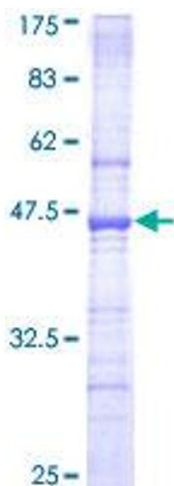
## Application Details

Application Notes:	Optimal working dilution should be determined by the investigator.
Comment:	Preparation method: in vitro, wheat germ expression system Product Quality tested by: 12.5% SDS-PAGE Stained with Coomassie Blue.
Restrictions:	For Research Use only

## Handling

Buffer:	50 mM Tris-HCl, 10 mM reduced Glutathione, pH =8.0 in the elution buffer.
Handling Advice:	Aliquot to avoid repeated freezing and thawing.
Storage:	-80 °C
Storage Comment:	Best use within three months from the date of receipt of this protein.

## Images



**Image 1.**