



[Go to Product page](#)

Datasheet for ABIN1324026

TTC39A Protein (AA 1-221) (GST tag)

1 Image

Overview

Quantity:	10 µg
Target:	TTC39A
Protein Characteristics:	AA 1-221
Origin:	Human
Source:	Wheat germ
Protein Type:	Recombinant
Purification tag / Conjugate:	This TTC39A protein is labelled with GST tag.
Application:	ELISA, Western Blotting (WB), Antibody Array (AA), Affinity Purification (AP)

Product Details

Purpose:	C1orf34 (Human) Recombinant Protein (P01)
Sequence:	MKAAYLSMFG KEDHKPFGDD EVELFRAVPG LKPKIAGKSL PTEKFAIRKS RRYFSSNPIS LPVPALEMMY IWNGYAVIGK QPKLTDGILE IITKAEEMLE KGPENEYSVD DECLVKLLKG LCLKYLGRVQ EAEENFRSIS ANEKKIKYDH YLIPNALLEL ALLLMEQDRN EEAIKLLESA KQNYKNYSME SRTHFRIQAA TLQAKSLEN SSRSMVSSVS L
Characteristics:	Human C1orf34 full-length ORF (XP_939747.1, 1 a.a. - 221 a.a.) recombinant protein with GST-tag at N-terminal.
Purification:	in vitro wheat germ expression system

Target Details

Target:	TTC39A
---------	--------

Target Details

Alternative Name:	TTC39A (TTC39A Products)
Background:	Full Gene Name: tetratricopeptide repeat domain 39A Synonyms: C1orf34,DEME-6,KIAA0452
Gene ID:	22996

Application Details

Application Notes:	Optimal working dilution should be determined by the investigator.
Comment:	Preparation method: in vitro, wheat germ expression system Product Quality tested by: 12.5% SDS-PAGE Stained with Coomassie Blue.
Restrictions:	For Research Use only

Handling

Buffer:	50 mM Tris-HCl, 10 mM reduced Glutathione, pH =8.0 in the elution buffer.
Handling Advice:	Aliquot to avoid repeated freezing and thawing.
Storage:	-80 °C
Storage Comment:	Best use within three months from the date of receipt of this protein.

Images

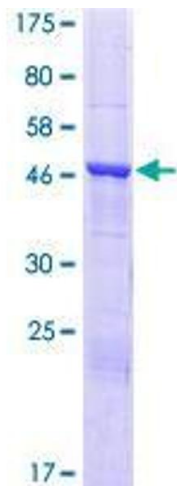


Image 1.