



[Go to Product page](#)

Datasheet for ABIN1324050

TTF2 Protein (AA 2-100) (GST tag)

1 Image

Overview

Quantity:	10 µg
Target:	TTF2
Protein Characteristics:	AA 2-100
Origin:	Human
Source:	Wheat germ
Protein Type:	Recombinant
Purification tag / Conjugate:	This TTF2 protein is labelled with GST tag.
Application:	ELISA, Western Blotting (WB), Antibody Array (AA), Affinity Purification (AP)

Product Details

Purpose:	TTF2 (Human) Recombinant Protein (Q01)
Sequence:	EEVRCPEHGT FCFLKTGVRD GPNKGKSFYV CRADTCSFVR ATDIPVSHCL LHEDFWELQ GLLLPQDKKE YRLFFRCIRS KAEGKRWCGS IPWQDPDSK
Characteristics:	Human TTF2 partial ORF (NP_003585, 2 a.a. - 100 a.a.) recombinant protein with GST-tag at N-terminal.
Purification:	in vitro wheat germ expression system

Target Details

Target:	TTF2
Alternative Name:	TTF2 (TTF2 Products)

Target Details

Background:	Full Gene Name: transcription termination factor, RNA polymerase II Synonyms: HuF2
Gene ID:	8458
NCBI Accession:	NM_003594
Pathways:	Thyroid Hormone Synthesis

Application Details

Application Notes:	Optimal working dilution should be determined by the investigator.
Comment:	Preparation method: in vitro, wheat germ expression system Product Quality tested by: 12.5% SDS-PAGE Stained with Coomassie Blue.
Restrictions:	For Research Use only

Handling

Buffer:	50 mM Tris-HCl, 10 mM reduced Glutathione, pH =8.0 in the elution buffer.
Handling Advice:	Aliquot to avoid repeated freezing and thawing.
Storage:	-80 °C
Storage Comment:	Best use within three months from the date of receipt of this protein.

Images

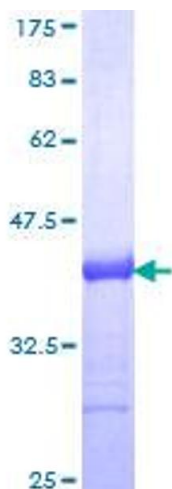


Image 1.