



[Go to Product page](#)

Datasheet for ABIN1324065

TTLL2 Protein (AA 1-592) (GST tag)

1 Image

Overview

Quantity:	25 µg
Target:	TTLL2
Protein Characteristics:	AA 1-592
Origin:	Human
Source:	Wheat germ
Protein Type:	Recombinant
Purification tag / Conjugate:	This TTLL2 protein is labelled with GST tag.
Application:	ELISA, Western Blotting (WB), Antibody Array (AA), Affinity Purification (AP)

Product Details

Purpose:	TTLL2 (Human) Recombinant Protein (P01)
Sequence:	MRGRDLCSSST QSQALGSLRT TTPAFTLNIP SEANHTEQPP AGLGARLQEA GVSIPRRRGR PTPTLEKKKK PHLMAEDEPS GALLKPLVFR VDETTPAVVQ SVLLERGWNK FDKQEQAED WNLYWRTSSF RMTEHNSVKP WQQLNHHPGT TKLTRKDCLA KHLKHMRRMY GTSLYQFIPL TFVMPNDYTK FVAEYFQERQ MLGTKHSYWI CKPAELSRGR GILIFSDFKD FIFDDMYIVQ KYISNPLIG RYKCDLRIYV CVTGFKPLTI VVYQEGLVRF ATEKFDLSNL QNNYAHLTNS SINKSGASYE KIKEVIGHGC KWTLRSRFFSY LRSWDVDDLL LWKKIHRMVI LTILAIAPSV PFAANCFELF GFDILIDDNL KPWLLEVNYS PALTLDCSTD VLVKRKLVDH IIDLIYLNGL RNEGGEASNA THGNSNIDAA KSDRGGLDAP DCLPYDSLFS TSRMYNEDDS VVEKAVSVRP EAAPASQLEG EMSGQDFHLS TREMPQSKPK LRSRHTPHKT LMPYASLFQS HSCKTKTSPC VLSDRGKAPD PQAGNFVLVF PFNEATLGAS RNGLNVKRII QELQKLMNKQ HS
Characteristics:	Human TTLL2 full-length ORF (AAH47411.1, 1 a.a. - 592 a.a.) recombinant protein with GST-tag

Product Details

at N-terminal.

Purification: in vitro wheat germ expression system

Target Details

Target: TTLL2

Alternative Name: TTLL2 ([TTLL2 Products](#))

Background: Full Gene Name: tubulin tyrosine ligase-like family, member 2
Synonyms: C6orf104,NYD-TSPG,dJ366N23.3

Gene ID: 83887

Application Details

Application Notes: Optimal working dilution should be determined by the investigator.

Comment: Preparation method: in vitro, wheat germ expression system
Product Quality tested by: 12.5% SDS-PAGE Stained with Coomassie Blue.

Restrictions: For Research Use only

Handling

Buffer: 50 mM Tris-HCl, 10 mM reduced Glutathione, pH =8.0 in the elution buffer.

Handling Advice: Aliquot to avoid repeated freezing and thawing.

Storage: -80 °C

Storage Comment: Best use within three months from the date of receipt of this protein.

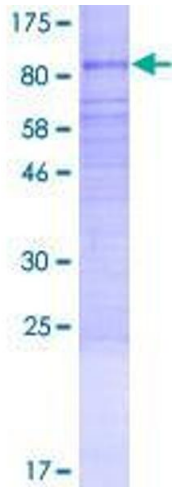


Image 1.