



[Go to Product page](#)

Datasheet for ABIN1324077

Titin Protein (TTN) (AA 26827-26926) (GST tag)

1 Image

Overview

Quantity:	10 µg
Target:	Titin (TTN)
Protein Characteristics:	AA 26827-26926
Origin:	Human
Source:	Wheat germ
Protein Type:	Recombinant
Purification tag / Conjugate:	This Titin protein is labelled with GST tag.
Application:	Western Blotting (WB), ELISA, Antibody Array (AA), Affinity Purification (AP)

Product Details

Purpose:	TTN (Human) Recombinant Protein (Q02)
Sequence:	IRGIPPKIEA LPSDISIDEG KVLTVACAFT GEPTPEVTWS CGGRKIHSQE QGRFHIENTD DLTTLIIMDV QKQDGGLYTL SLGNEFGSDS ATVNIHIRSI
Characteristics:	Human TTN partial ORF (NP_003310.2, 26827 a.a. - 26926 a.a.) recombinant protein with GST-tag at N-terminal.
Purification:	in vitro wheat germ expression system

Target Details

Target:	Titin (TTN)
Alternative Name:	TTN (TTN Products)
Name:	

Target Details

Background: Full Gene Name: titin

Synonyms:

CMD1G,CMH9,CMPD4,CONNECTIN,DKFZp451N061,EOMFC,FLJ26020,FLJ26409,FLJ32040,FLJ34413,FLJ39564,FLJ430

Gene ID: 7273

NCBI [NM_003319](#)

Accession:

Application Details

Application Notes: Optimal working dilution should be determined by the investigator.

Comment: Preparation method: in vitro, wheat germ expression system
Product Quality tested by: 12.5% SDS-PAGE Stained with Coomassie Blue.

Restrictions: For Research Use only

Handling

Buffer: 50 mM Tris-HCl, 10 mM reduced Glutathione, pH =8.0 in the elution buffer.

Handling Advice: Aliquot to avoid repeated freezing and thawing.

Storage: -80 °C

Storage Comment: Best use within three months from the date of receipt of this protein.

Images

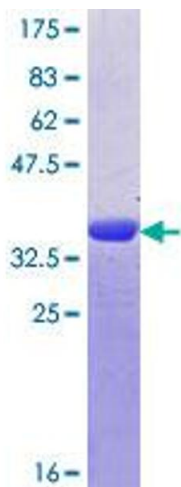


Image 1.