



[Go to Product page](#)

Datasheet for ABIN1324100

TUBA1A Protein (AA 352-451) (GST tag)

1 Image

Overview

Quantity:	10 µg
Target:	TUBA1A (Tuba1a)
Protein Characteristics:	AA 352-451
Origin:	Human
Source:	Wheat germ
Protein Type:	Recombinant
Purification tag / Conjugate:	This TUBA1A protein is labelled with GST tag.
Application:	ELISA, Western Blotting (WB), Antibody Array (AA), Affinity Purification (AP)

Product Details

Purpose:	TUBA1A (Human) Recombinant Protein (Q01)
Sequence:	KVGINYQPPT VVPGDLAKV QRAVCMLSNT TAIAEAWARL DHKFDLMYAK RAFVHWYVGE GMEEGEFSEA REDMAALEKD YEEVGVSVE GEGEEEEGEEY
Characteristics:	Human TUBA1A partial ORF (NP_006000, 352 a.a. - 451 a.a.) recombinant protein with GST-tag at N-terminal.
Purification:	in vitro wheat germ expression system

Target Details

Target:	TUBA1A (Tuba1a)
Alternative Name:	TUBA1A (Tuba1a Products)

Target Details

Background: Full Gene Name: tubulin, alpha 1a
Synonyms: B-ALPHA-1,FLJ25113,LIS3,TUBA3

Gene ID: 7846

NCBI Accession: [NM_006009](#)

Pathways: [Microtubule Dynamics, M Phase](#)

Application Details

Application Notes: Optimal working dilution should be determined by the investigator.

Comment: Preparation method: in vitro, wheat germ expression system
Product Quality tested by: 12.5% SDS-PAGE Stained with Coomassie Blue.

Restrictions: For Research Use only

Handling

Buffer: 50 mM Tris-HCl, 10 mM reduced Glutathione, pH =8.0 in the elution buffer.

Handling Advice: Aliquot to avoid repeated freezing and thawing.

Storage: -80 °C

Storage Comment: Best use within three months from the date of receipt of this protein.

Images

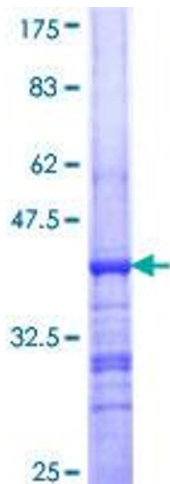


Image 1.