

Datasheet for ABIN1324112
TUBA3D Protein (AA 1-450) (GST tag)



[Go to Product page](#)

1 Image

Overview

Quantity:	10 µg
Target:	TUBA3D
Protein Characteristics:	AA 1-450
Origin:	Human
Source:	Wheat germ
Protein Type:	Recombinant
Purification tag / Conjugate:	This TUBA3D protein is labelled with GST tag.
Application:	ELISA, Antibody Array (AA), Affinity Purification (AP), Western Blotting (WB)

Product Details

Purpose:	TUBA3D (Human) Recombinant Protein (P01)
Sequence:	MRECISIHVG QAGVQIGNAC WELYCLEHGI QPDGQMPSDK TIGGGDDSFN TFFSETGAGK HVPRAVFVDL EPTVVDEVRT GTYRQLFHPE QLITGKEDAA NNYARGHYTI GKEIVDLVLD RIRKLADLCT GLQGFLIFHS FGGGTGSGFA SLLMERLSVD YGKKSLEFA IYPAPQVSTA VVEPYNSILT THTTLEHSDC AFMVDNEAIY DICRRNLDIE RPTYTNLNRL IGQIVSSITA SLRFDGALNV DLTEFQTNLV PYPRIHFPLA TYAPVISA EK AYHEQLSVAE ITNACFEPAN QMKVYDPRHG KYMACCMLYR GDVVPKDVNA AIATIKTKRT IQFVDWCPTG FKVGINYQPP TVVPGGDLAK VQRAVCMLSN TTAIAEAWAR LDHKFDL MYA KRA FVHWYVG EGMEEGEFSE AREDLA ALEK DYEEVGVD SV EAEAEEGEEY
Characteristics:	Human TUBA3D full-length ORF (NP_525125.1, 1 a.a. - 450 a.a.) recombinant protein with GST-tag at N-terminal.

Product Details

Purification: in vitro wheat germ expression system

Target Details

Target: TUBA3D

Alternative Name: TUBA3D ([TUBA3D Products](#))

Background: Full Gene Name: tubulin, alpha 3d
Synonyms: H2-ALPHA

Gene ID: 113457

NCBI Accession: [NM_080386](#)

Application Details

Application Notes: Optimal working dilution should be determined by the investigator.

Comment: Preparation method: in vitro, wheat germ expression system
Product Quality tested by: 12.5% SDS-PAGE Stained with Coomassie Blue.

Restrictions: For Research Use only

Handling

Buffer: 50 mM Tris-HCl, 10 mM reduced Glutathione, pH =8.0 in the elution buffer.

Handling Advice: Aliquot to avoid repeated freezing and thawing.

Storage: -80 °C

Storage Comment: Best use within three months from the date of receipt of this protein.

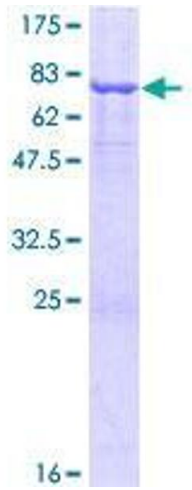


Image 1.