



[Go to Product page](#)

Datasheet for ABIN1324114

TUBA3E Protein (AA 1-450) (GST tag)

1 Image

Overview

Quantity:	10 µg
Target:	TUBA3E
Protein Characteristics:	AA 1-450
Origin:	Human
Source:	Wheat germ
Protein Type:	Recombinant
Purification tag / Conjugate:	This TUBA3E protein is labelled with GST tag.
Application:	ELISA, Western Blotting (WB), Antibody Array (AA), Affinity Purification (AP)

Product Details

Purpose:	TUBA3E (Human) Recombinant Protein (P01)
Sequence:	MRECISIHVG QAGVQIGNAC WELYCLEHGI QPDGQMPSDK TIGGGDDSFN TFFSETGAGK HVPRAVFVDL EPTVVDEVRT GTYRQLFHPE QLITGKEDAA SNYARGHYTI GKEIVDLVLD RIRKLADLCT GLQGFLIFHS FGGGTGSGFA SLLMERLSVD YSKKSKLEFA IYPAPQVSTA VVEPYNSILT THTTLEHSDC AFMVDNEAIY DICRRNLDIE RPTYTNLNRL IGQIVSSITA SLRFDGALNV DLTEFQTNLV PYPRIHFPLA TYAPVISA EK AYHEQLSVAE ITNACFEPAN QMVKCDPRHG KYMACCMLYR GDVVPKDVNA AIATIKTKRT IQFVDWCPTG FKVGINYQPP TVVPGGDLAK VQRAVCMLSN TTAIAEAWAR LVHKFDLMYA KWAFVHWYVG EGMEEGEFSE AREDLAALK DCEEVGVDVSV EAEAEEGEEY
Characteristics:	Human TUBA3E full-length ORF (NP_997195.1, 1 a.a. - 450 a.a.) recombinant protein with GST-tag at N-terminal.

Product Details

Purification: in vitro wheat germ expression system

Target Details

Target: TUBA3E

Alternative Name: TUBA3E ([TUBA3E Products](#))

Background: Full Gene Name: tubulin, alpha 3e
Synonyms:

Gene ID: 112714

NCBI Accession: [NM_207312](#)

Pathways: [Microtubule Dynamics](#)

Application Details

Application Notes: Optimal working dilution should be determined by the investigator.

Comment: Preparation method: in vitro, wheat germ expression system
Product Quality tested by: 12.5% SDS-PAGE Stained with Coomassie Blue.

Restrictions: For Research Use only

Handling

Buffer: 50 mM Tris-HCl, 10 mM reduced Glutathione, pH =8.0 in the elution buffer.

Handling Advice: Aliquot to avoid repeated freezing and thawing.

Storage: -80 °C

Storage Comment: Best use within three months from the date of receipt of this protein.

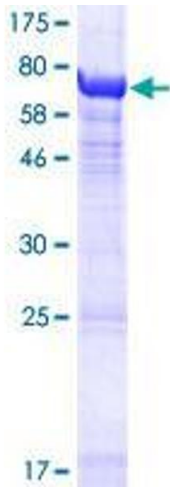


Image 1.