



[Go to Product page](#)

Datasheet for ABIN1324118

TUBA8 Protein (AA 1-449) (GST tag)

1 Image

Overview

Quantity:	10 µg
Target:	TUBA8
Protein Characteristics:	AA 1-449
Origin:	Human
Source:	Wheat germ
Protein Type:	Recombinant
Purification tag / Conjugate:	This TUBA8 protein is labelled with GST tag.
Application:	ELISA, Western Blotting (WB), Antibody Array (AA), Affinity Purification (AP)

Product Details

Purpose:	TUBA8 (Human) Recombinant Protein (P01)
Sequence:	MRECISVHVG QAGVQIGNAC WELFCLEHGI QADGTFDAQA SKINDDDSFT TFFSETGNGK HVPRAVMIDL EPTVVDEVRA GTYRQLFHPE QLITGKEDAA NNYARGHYTV GKESIDLVLVD RIRKLTDACs GLQGFLIFHS FGGGTGSGFT SLLMERLSLD YGKKSLEFA IYPAPQVSTA VVEPYNSILT THTTLEHSDC AFMVDNEAIY DICRRNLDIE RPTYTNLNRL ISQIVSSITA SLRFDGALNV DLTEFQTNLV PYPRIHFPLV TYAPIISAEK AYHEQLSVAE ITSSCFEPNS QMKVCDPRHG KYMACCMLYR GDVVPKDVNV AIAAIKTKRT IQFVDWCPTG FKVGINYQPP TVVPGGDLAK VQRAVCMLSN TTAIAEAWAR LDHKFDLMYA KRAFVHWYVG EGMEEGEFSE AREDLAALK DYEEVGTDSE EEENEGEEF
Characteristics:	Human TUBA8 full-length ORF (NP_061816.1, 1 a.a. - 449 a.a.) recombinant protein with GST-tag at N-terminal.

Product Details

Purification: in vitro wheat germ expression system

Target Details

Target: TUBA8

Alternative Name: TUBA8 ([TUBA8 Products](#))

Background: Full Gene Name: tubulin, alpha 8
Synonyms: TUBAL2

Gene ID: 51807

NCBI Accession: [NM_018943](#)

Pathways: [Microtubule Dynamics](#)

Application Details

Application Notes: Optimal working dilution should be determined by the investigator.

Comment: Preparation method: in vitro, wheat germ expression system
Product Quality tested by: 12.5% SDS-PAGE Stained with Coomassie Blue.

Restrictions: For Research Use only

Handling

Buffer: 50 mM Tris-HCl, 10 mM reduced Glutathione, pH =8.0 in the elution buffer.

Handling Advice: Aliquot to avoid repeated freezing and thawing.

Storage: -80 °C

Storage Comment: Best use within three months from the date of receipt of this protein.

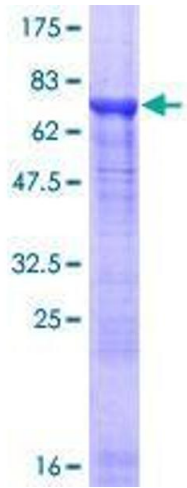


Image 1.