

Datasheet for ABIN1324120
TUBA8 Protein (AA 1-89) (GST tag)



[Go to Product page](#)

1 Image

Overview

Quantity:	10 µg
Target:	TUBA8
Protein Characteristics:	AA 1-89
Origin:	Human
Source:	Wheat germ
Protein Type:	Recombinant
Purification tag / Conjugate:	This TUBA8 protein is labelled with GST tag.
Application:	ELISA, Western Blotting (WB), Antibody Array (AA), Affinity Purification (AP)

Product Details

Purpose:	TUBA8 (Human) Recombinant Protein (Q01)
Sequence:	MRECISVHVG QAGVQIGNAC WELFCLEHGI QADGTFDAQA SKINDDDSFT TFFSETGNGK HVPRAVMIDL EPTVVDEVRA GTYRQLFHP
Characteristics:	Human TUBA8 partial ORF (NP_061816.1, 1 a.a. - 89 a.a.) recombinant protein with GST-tag at N-terminal.
Purification:	in vitro wheat germ expression system

Target Details

Target:	TUBA8
Alternative Name:	TUBA8 (TUBA8 Products)

Target Details

Background: Full Gene Name: tubulin, alpha 8
Synonyms: TUBAL2

Gene ID: 51807

NCBI Accession: [NM_018943](#)

Pathways: [Microtubule Dynamics](#)

Application Details

Application Notes: Optimal working dilution should be determined by the investigator.

Comment: Preparation method: in vitro, wheat germ expression system
Product Quality tested by: 12.5% SDS-PAGE Stained with Coomassie Blue.

Restrictions: For Research Use only

Handling

Buffer: 50 mM Tris-HCl, 10 mM reduced Glutathione, pH =8.0 in the elution buffer.

Handling Advice: Aliquot to avoid repeated freezing and thawing.

Storage: -80 °C

Storage Comment: Best use within three months from the date of receipt of this protein.

Images

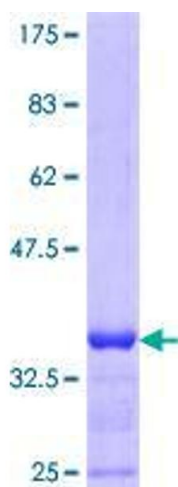


Image 1.