

Datasheet for ABIN1324124  
**TUBB Protein (AA 1-444) (GST tag)**



[Go to Product page](#)

1 Image

Overview

Quantity:	10 µg
Target:	TUBB
Protein Characteristics:	AA 1-444
Origin:	Human
Source:	Wheat germ
Protein Type:	Recombinant
Purification tag / Conjugate:	This TUBB protein is labelled with GST tag.
Application:	ELISA, Western Blotting (WB), Antibody Array (AA), Affinity Purification (AP)

Product Details

Purpose:	TUBB (Human) Recombinant Protein (P01)
Sequence:	MREIVHIQAG QCGNQIGAKF WEVISDEHGI DPTGTYHGDS DLQLDRISVY YNEATGGKYV PRAILVDLEP GTMDSVRS GP FGQIFRPDNF VFGQSGAGNN WAKGHYTEGA ELVDSVLDVV RKEAESCDCL QGFQLTHSLG GGTGSGMGTL LISKIREEYP DRIMNTFSVV PSPKVS DTVV EPYNATLSVH QLVENTDETY CIDNEALYDI CFRTLKLTTP TYGDLNHLVS ATMSGVTTCL RFPGQLNADL RKLAVNMVPF PRLHFFMPGF APLTSRGSQQ YRALTVPELT QQVFDKNNMM AACDPRHGRY LTVAAVFRGR MSMKEVDEQM LNVQNKNSY FVEWIPNNVK TAVCDIPPRG LKMAVTFIGN STAIQELFKR ISEQFTAMFR RKAFLHWYTG EGMDEMEFTE AESNMNDLVS EYQYQDATA EEEEDFGEEA EEEA
Characteristics:	Human TUBB full-length ORF ( AAH19924, 1 a.a. - 444 a.a.) recombinant protein with GST-tag at N-terminal.

## Product Details

---

Purification: in vitro wheat germ expression system

## Target Details

---

Target: TUBB

Alternative Name: TUBB ([TUBB Products](#))

Background: Full Gene Name: tubulin, beta  
Synonyms: M40,MGC117247,MGC16435,OK/SW-cl.56,TUBB1,TUBB5

Gene ID: 203068

Pathways: [Microtubule Dynamics, M Phase](#)

## Application Details

---

Application Notes: Optimal working dilution should be determined by the investigator.

Comment: Preparation method: in vitro, wheat germ expression system  
Product Quality tested by: 12.5% SDS-PAGE Stained with Coomassie Blue.

Restrictions: For Research Use only

## Handling

---

Buffer: 50 mM Tris-HCl, 10 mM reduced Glutathione, pH =8.0 in the elution buffer.

Handling Advice: Aliquot to avoid repeated freezing and thawing.

Storage: -80 °C

Storage Comment: Best use within three months from the date of receipt of this protein.

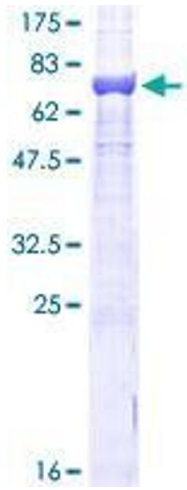


Image 1.