



[Go to Product page](#)

Datasheet for ABIN1324161

TUBGCP4 Protein (AA 1-666) (GST tag)

1 Image

Overview

Quantity:	10 µg
Target:	TUBGCP4
Protein Characteristics:	AA 1-666
Origin:	Human
Source:	Wheat germ
Protein Type:	Recombinant
Purification tag / Conjugate:	This TUBGCP4 protein is labelled with GST tag.
Application:	ELISA, Western Blotting (WB), Antibody Array (AA), Affinity Purification (AP)

Product Details

Purpose:	TUBGCP4 (Human) Recombinant Protein (P01)
Sequence:	MIHELLLALS GYPGSIFTWN KRSLQVSQD FPFLHPSETS VLNRLCRLGT DYIRFTEFIE QYTGHVQQQD HHPSQQGGG LHGIYLRAFC TGLDSVLQPY RQALLDLEQE FLGDPHLSIS HVNYFLDQFQ LLFSPVMVVV EQIKSQKIHG CQILETVYKH SCGGLPPVRS ALEKILAVCH GVMYKQLSAW MLHGLLLDQH EEFFIKQGPS SGNVSAQPEE DEEDLGIGGL TGKQLRELQD LRLIEENML APSLKQFSLR VEILPSYIPV RVAEKILFVG ESVQMFENQN VNLTRKGSIL KNQEDTFAAE LHRLKQQPLF SLVDFEQVVD RIRSTVAEHL WKLMVEESDL LGQLKIIKDF YLLGRGELFQ AFIDTAQHML KTPPTAVTEH DVNVAFQQA HKVLLDDDNL LPLLHLTIEY HGKEHKDATQ AREGPSRETS PREAPASGWA ALGLSYKVQW PLHILFTPAV LEKYNVVFYK LLSVRRVQAE LQHCWALQMQ RKHLKSNQTD AIKWRLRNHM AFLVDNLQYY LQVDVLESQF SQLLHQINST RDFESIRLAH DHFLSNLLAQ SFILLKPVFH CLNEILDLC SFCSLVSQNL GPLDERGAAQ LSILVKGFSR QSSLLFKILS SVRNHQINSD LAQLLLRLDY NKYYTQAGGT LGSFGM

Product Details

Characteristics:	Human TUBGCP4 full-length ORF (NP_055259.2, 1 a.a. - 666 a.a.) recombinant protein with GST-tag at N-terminal.
Purification:	in vitro wheat germ expression system

Target Details

Target:	TUBGCP4
Alternative Name:	TUBGCP4 (TUBGCP4 Products)
Background:	Full Gene Name: tubulin, gamma complex associated protein 4 Synonyms: 76P,FLJ14797,GCP4
Gene ID:	27229
NCBI Accession:	NM_014444
Pathways:	M Phase

Application Details

Application Notes:	Optimal working dilution should be determined by the investigator.
Comment:	Preparation method: in vitro, wheat germ expression system Product Quality tested by: 12.5% SDS-PAGE Stained with Coomassie Blue.
Restrictions:	For Research Use only

Handling

Buffer:	50 mM Tris-HCl, 10 mM reduced Glutathione, pH =8.0 in the elution buffer.
Handling Advice:	Aliquot to avoid repeated freezing and thawing.
Storage:	-80 °C
Storage Comment:	Best use within three months from the date of receipt of this protein.

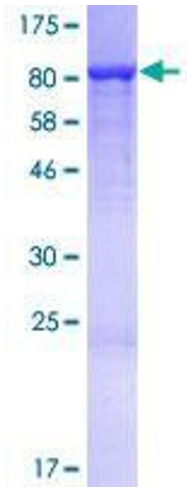


Image 1.