



[Go to Product page](#)

Datasheet for ABIN1324167

## TUFM Protein (AA 40-455) (GST tag)

### 1 Image

#### Overview

Quantity:	10 µg
Target:	TUFM (Tufm)
Protein Characteristics:	AA 40-455
Origin:	Human
Source:	Wheat germ
Protein Type:	Recombinant
Purification tag / Conjugate:	This TUFM protein is labelled with GST tag.
Application:	ELISA, Western Blotting (WB), Antibody Array (AA), Affinity Purification (AP)

#### Product Details

Purpose:	TUFM (Human) Recombinant Protein (P01)
Sequence:	PLLCRGLAVE AKKTYVRDKP HVNVGTIGHV DHGKTTLTAA TTKILAEGGG AKFKKYEEID NAPEERARGI TINAAHVEYS TAARHYAHTD CPGHADYVKN MITGTAPLDG CILVVAANDG PMPQTREHLL LARQIGVEHV VVYVNKADAV QDSEMVOLVE LEIRELLTEF GYKGEETPVI VGSALCALEG RDPELGLKSV QKLLDAVDY IPVPARDLEK PFLLPVEAVY SVPGRGTVVT GTLERGILKK GDECELLGHS KNIRTVVTGI EMFHKSLERA EAGDNLGALV RGLKREDLRR GLVMVKPGSI KPHQKVEAQV YILSKEEGGR HKPFVSHFMP VMFSLTWDMA CRIILPPEKE LAMPGEDLKF NLILRQPMIL EKGQRFTLRD GNRTIGTGLV TNTLAMTEEE KNIKWG
Characteristics:	Human TUFM full-length ORF ( AAH01633, 40 a.a. - 455 a.a.) recombinant protein with GST-tag at N-terminal.
Purification:	in vitro wheat germ expression system

## Target Details

Target:	TUFM (Tufm)
Alternative Name:	TUFM ( <a href="#">Tufm Products</a> )
Background:	Full Gene Name: Tu translation elongation factor, mitochondrial Synonyms: COXPD4,EF-TuMT,EFTU,P43
Gene ID:	7284

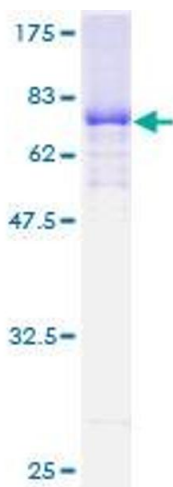
## Application Details

Application Notes:	Optimal working dilution should be determined by the investigator.
Comment:	Preparation method: in vitro, wheat germ expression system Product Quality tested by: 12.5% SDS-PAGE Stained with Coomassie Blue.
Restrictions:	For Research Use only

## Handling

Buffer:	50 mM Tris-HCl, 10 mM reduced Glutathione, pH =8.0 in the elution buffer.
Handling Advice:	Aliquot to avoid repeated freezing and thawing.
Storage:	-80 °C
Storage Comment:	Best use within three months from the date of receipt of this protein.

## Images



**Image 1.**