



[Go to Product page](#)

Datasheet for ABIN1324188

NPRL2 Protein (AA 1-380) (GST tag)

1 Image

Overview

Quantity:	10 µg
Target:	NPRL2
Protein Characteristics:	AA 1-380
Origin:	Human
Source:	Wheat germ
Protein Type:	Recombinant
Purification tag / Conjugate:	This NPRL2 protein is labelled with GST tag.
Application:	ELISA, Western Blotting (WB), Antibody Array (AA), Affinity Purification (AP)

Product Details

Purpose:	TUSC4 (Human) Recombinant Protein (P01)
Sequence:	MSGGCRIECI FFSEFHLTLG PKITYQVPED FISRELFDTV QVYIITKPEP QNKLITVTAM EKKLGICPVC IEHKKYSRNA LLFNLGFVCD AQAKTCALEP IVKLAGYLT TLELESSFVS MEESKQKLVP IMTILLEELN ASGRCTLPID ESNTIHLKVI EQRDPDPPVAQ EYDVPVFTKD KEDFFNSQWD LTTQQILPYI DGFRIHQKIS AEADVLELNLV RIAIQNLLYY GVVTLSILQ YSNVYCPTPK VQDLVDDKSL QEACLSYVTK QGHKRASLRD VFQLYCSLSP GTTVRDLIGR HPQQLQHVDE RKLIQFGLMK NLIRRLQKYP VRVTREEQSH PARLYTGCHS YDEICCKTGM SYHELDERLE NDPNIIICWK
Characteristics:	Human TUSC4 full-length ORF (AAH21984, 1 a.a. - 380 a.a.) recombinant protein with GST-tag at N-terminal.
Purification:	in vitro wheat germ expression system

Target Details

Target:	NPRL2
Alternative Name:	TUSC4 (NPRL2 Products)
Background:	Full Gene Name: tumor suppressor candidate 4 Synonyms: NPR2L,NPRL2
Gene ID:	10641

Application Details

Application Notes:	Optimal working dilution should be determined by the investigator.
Comment:	Preparation method: in vitro, wheat germ expression system Product Quality tested by: 12.5% SDS-PAGE Stained with Coomassie Blue.
Restrictions:	For Research Use only

Handling

Buffer:	50 mM Tris-HCl, 10 mM reduced Glutathione, pH =8.0 in the elution buffer.
Handling Advice:	Aliquot to avoid repeated freezing and thawing.
Storage:	-80 °C
Storage Comment:	Best use within three months from the date of receipt of this protein.

Images

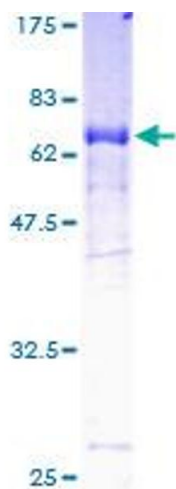


Image 1.