

Datasheet for ABIN1324198  
**TWIST1 Protein (AA 1-202) (GST tag)**



[Go to Product page](#)

1 Image

## Overview

Quantity:	10 µg
Target:	TWIST1
Protein Characteristics:	AA 1-202
Origin:	Human
Source:	Wheat germ
Protein Type:	Recombinant
Purification tag / Conjugate:	This TWIST1 protein is labelled with GST tag.
Application:	Western Blotting (WB), ELISA, Antibody Array (AA), Affinity Purification (AP)

## Product Details

Purpose:	TWIST1 (Human) Recombinant Protein (P01)
Sequence:	MMQDVSSSPV SPADDSLSNS EEEPDRQPP SGKRGGRRR SSRRSAGGGA GPGGAAGGGV GGGDEPGSPA QGKRGKKSAG CGGGGGAGGG GGSSSGGGSP QSYEELQTR VMANVRERQR TQSLNEAFAA LRKIPTLPS DKLSKIQLK LAARYIDFLY QVLQSDDELDS KMASCSYVAH ERLSYAFSVW RMEGAWSMSA SH
Characteristics:	Human TWIST1 full-length ORF ( AAH36704, 1 a.a. - 202 a.a.) recombinant protein with GST-tag at N-terminal.
Purification:	in vitro wheat germ expression system

## Target Details

Target:	TWIST1
---------	--------

## Target Details

Alternative Name:	TWIST1 (TWIST1 Products)
Background:	Full Gene Name: twist homolog 1 (Drosophila) Synonyms: ACS3,BPES2,BPES3,SCS,TWIST,bHLHa38
Gene ID:	7291
Pathways:	<a href="#">p53 Signaling</a> , <a href="#">Proton Transport</a> , <a href="#">Tube Formation</a> , <a href="#">Negative Regulation of Transporter Activity</a>

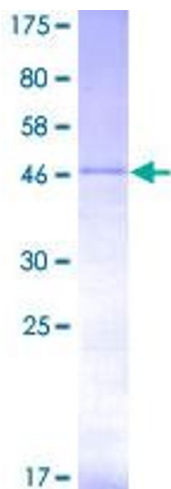
## Application Details

Application Notes:	Optimal working dilution should be determined by the investigator.
Comment:	Preparation method: in vitro, wheat germ expression system Product Quality tested by: 12.5% SDS-PAGE Stained with Coomassie Blue.
Restrictions:	For Research Use only

## Handling

Buffer:	50 mM Tris-HCl, 10 mM reduced Glutathione, pH =8.0 in the elution buffer.
Handling Advice:	Aliquot to avoid repeated freezing and thawing.
Storage:	-80 °C
Storage Comment:	Best use within three months from the date of receipt of this protein.

## Images



**Image 1.**