

Datasheet for ABIN1324224  
**TMX3 Protein (AA 1-454) (GST tag)**



[Go to Product page](#)

1 Image

## Overview

Quantity:	10 µg
Target:	TMX3
Protein Characteristics:	AA 1-454
Origin:	Human
Source:	Wheat germ
Protein Type:	Recombinant
Purification tag / Conjugate:	This TMX3 protein is labelled with GST tag.
Application:	ELISA, Western Blotting (WB), Antibody Array (AA), Affinity Purification (AP)

## Product Details

Purpose:	TXNDC10 (Human) Recombinant Protein (P01)
Sequence:	MAAWKSWTAL RLCATVVVLD MVVCKGFVED LDESKENRN DDIWLVDFYA PWCGRHCKKLE PIWNEVGLEM KSIGSPVKVG KMDATSYSSI ASEFGVRYGYP TIKLLKGDLA YNYRGPRTKD DIIFAHRVS GALIRPLPSQ QMFEHMQKRH RVFFVYVGGG SPLKEKYIDA ASELIVYTYF FSASEEVVPE YVTLKEMPAV LVFKDETYFV YDEYEDGDL SWINRERFQN YLAMDGFLLY ELGDTGKLVA LAVIDEKNTS VEHTRLSII QEVARDYRDL FHRDFQFGHM DGNDYINTLL MDELTVPVTV VLNTSNQQYF LLDRQIKNVE DMVQFINNIL DGTVEAQGGD SILQRLKRIV FDAKSTIVSI FKSSPLMGCF LFGLPLGVIS IMCYGIYTAD TDGGYIEERY EVSKSENENQ EQIEESKEQQ EPSSGGSVVP TVQEPKDVLE KKKD
Characteristics:	Human TXNDC10 full-length ORF ( NP_061895.3, 1 a.a. - 454 a.a.) recombinant protein with GST-tag at N-terminal.

## Product Details

---

Purification: in vitro wheat germ expression system

## Target Details

---

Target: TMX3

Alternative Name: TXNDC10 ([TMX3 Products](#))

Background: Full Gene Name: thioredoxin domain containing 10  
Synonyms: FLJ20793,KIAA1830,TMX3

Gene ID: 54495

NCBI Accession: [NM\\_019022](#)

Pathways: [Cell RedoxHomeostasis](#)

## Application Details

---

Application Notes: Optimal working dilution should be determined by the investigator.

Comment: Preparation method: in vitro, wheat germ expression system  
Product Quality tested by: 12.5% SDS-PAGE Stained with Coomassie Blue.

Restrictions: For Research Use only

## Handling

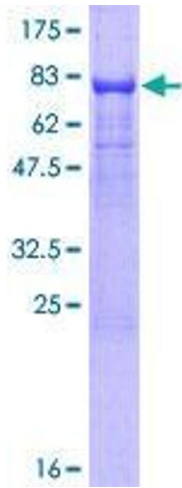
---

Buffer: 50 mM Tris-HCl, 10 mM reduced Glutathione, pH =8.0 in the elution buffer.

Handling Advice: Aliquot to avoid repeated freezing and thawing.

Storage: -80 °C

Storage Comment: Best use within three months from the date of receipt of this protein.



**Image 1.**