



[Go to Product page](#)

Datasheet for ABIN1324229

## TXNDC3/NME8 Protein (AA 530-586) (GST tag)

### 1 Image

#### Overview

Quantity:	10 µg
Target:	TXNDC3/NME8 (TXNDC3)
Protein Characteristics:	AA 530-586
Origin:	Human
Source:	Wheat germ
Protein Type:	Recombinant
Purification tag / Conjugate:	This TXNDC3/NME8 protein is labelled with GST tag.
Application:	ELISA, Western Blotting (WB), Antibody Array (AA), Affinity Purification (AP)

#### Product Details

Purpose:	TXNDC3 (Human) Recombinant Protein (Q01)
Sequence:	AEWRRLLMGPT DPEEAKLLSP DSIRAQFGIS KLKNIVHGAS NAYEAKEVNVN RLFEDPE
Characteristics:	Human TXNDC3 partial ORF ( NP_057700, 530 a.a. - 586 a.a.) recombinant protein with GST-tag at N-terminal.
Purification:	in vitro wheat germ expression system

#### Target Details

Target:	TXNDC3/NME8 (TXNDC3)
Alternative Name:	TXNDC3 ( <a href="#">TXNDC3 Products</a> )
Background:	Full Gene Name: thioredoxin domain containing 3 (spermatzoa)

## Target Details

Synonyms: CILD6,NME8,SPTRX2

Gene ID: 51314

NCBI Accession: [NM\\_016616](#)

Pathways: [Nucleotide Phosphorylation](#), [Ribonucleoside Biosynthetic Process](#), [Cell RedoxHomeostasis](#)

## Application Details

Application Notes: Optimal working dilution should be determined by the investigator.

Comment: Preparation method: in vitro, wheat germ expression system  
Product Quality tested by: 12.5% SDS-PAGE Stained with Coomassie Blue.

Restrictions: For Research Use only

## Handling

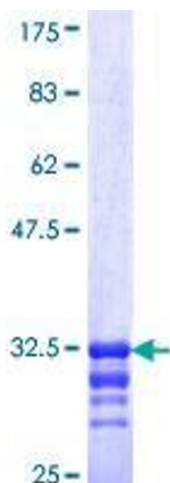
Buffer: 50 mM Tris-HCl, 10 mM reduced Glutathione, pH =8.0 in the elution buffer.

Handling Advice: Aliquot to avoid repeated freezing and thawing.

Storage: -80 °C

Storage Comment: Best use within three months from the date of receipt of this protein.

## Images



**Image 1.**