

Datasheet for ABIN1324282

U2AF2 Protein (AA 141-240) (GST tag)[Go to Product page](#)**1** Image

Overview

Quantity:	10 µg
Target:	U2AF2 (U2AF59)
Protein Characteristics:	AA 141-240
Origin:	Human
Source:	Wheat germ
Protein Type:	Recombinant
Purification tag / Conjugate:	This U2AF2 protein is labelled with GST tag.
Application:	ELISA, Western Blotting (WB), Antibody Array (AA), Affinity Purification (AP)

Product Details

Purpose:	U2AF2 (Human) Recombinant Protein (Q01)
Sequence:	GSQMTRQARR LYVGNIPFGI TEEAMMDFFN AQMRLGGLTQ APGNPVLAVQ INQDKNFAFL EFRSVDETTQ AMAFDGIIFQ GQSLKIRRPD DYQPLPGMSE
Characteristics:	Human U2AF2 partial ORF (NP_001012496.1, 141 a.a. - 240 a.a.) recombinant protein with GST-tag at N-terminal.
Purification:	in vitro wheat germ expression system

Target Details

Target:	U2AF2 (U2AF59)
Alternative Name:	U2AF2 (U2AF59 Products)

Target Details

Background:	Full Gene Name: U2 small nuclear RNA auxiliary factor 2 Synonyms: U2AF65
Gene ID:	11338
NCBI Accession:	NM_001012478

Application Details

Application Notes:	Optimal working dilution should be determined by the investigator.
Comment:	Preparation method: in vitro, wheat germ expression system Product Quality tested by: 12.5% SDS-PAGE Stained with Coomassie Blue.
Restrictions:	For Research Use only

Handling

Buffer:	50 mM Tris-HCl, 10 mM reduced Glutathione, pH =8.0 in the elution buffer.
Handling Advice:	Aliquot to avoid repeated freezing and thawing.
Storage:	-80 °C
Storage Comment:	Best use within three months from the date of receipt of this protein.

Images

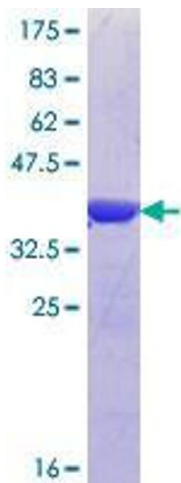


Image 1.