

Datasheet for ABIN1324288
UBA1 Protein (AA 1-1058) (GST tag)



[Go to Product page](#)

1 Image

Overview

Quantity:	10 µg
Target:	UBA1
Protein Characteristics:	AA 1-1058
Origin:	Human
Source:	Wheat germ
Protein Type:	Recombinant
Purification tag / Conjugate:	This UBA1 protein is labelled with GST tag.
Application:	ELISA, Western Blotting (WB), Antibody Array (AA), Affinity Purification (AP)

Product Details

Purpose:	UBA1 (Human) Recombinant Protein (P01)
Sequence:	MSSSPLSKKR RVSGPDPKPG SNCSPAQSVL SEVPSVPTNG MAKNGSEADI DEGLYSRQLY VLGHEAMKRL QTSSVLVSGL RGLGVEIAKN IILGGVKAVT LHDQGTAQWA DLSSQFYLRE EDIGKNRAEV SQPRLAELNS YVPVTAYTGP LVEDFLSGFQ VVVLNTNTPLE DQLRVGEFCH NRGIKLVVAD TRGLFGQLFC DFGEEMILTD SNGEQPLSAM VSMVTKDNPG VVTCLDEARH GFESGDFVSF SEVQGMVELN GNQPMEIKVL GPYTFSICDT SNFSDYIRGG IVSQVKVPPK ISFKSLVASL AEPDFVVTDF AKFSRPAQLH IGFQALHQFC AQHGRPPRPR NEEDAAELVA LAQAVNARAL PAVQQNNLDE DLIRKLAYVA AGDLAPINAF IGGAAQEVN KACSGKFMPI MQWLYFDALE CLPEDKEVLT EDKCLQRQNR YDQQVAVFGS DLQEKLKQK YFLVGAGAIG CELLKNFAMI GLGCGEGGEI IVTDMDTIEK SNLNRQFLFR PWDVTKLKS D TAAA A VRQMN PHIRVTSHQN RVGP DTERIY DDDFFQNL DG VANALDNVDA RMYMDRRCVY YRKPLLES GT LGTKGNVQVV IPFLTESYSS SQDPPEKSIP ICTLKNFPNA IEHTLQWARD EFEGFLKQPA

Product Details

ENVNQYLTDK KFVERTLRLA GTQPLEVLEA VQRSLVLQRP QTWADCVTWA CHHWHTQYSN
NIRQLLHNFP PDQLTSSGAP FWSGPKRCPH PLTFDVNNPL HLDYVMAAAN LFAQTYGLTG
SQDRAAVATF LQSVQVPEFT PKSGVKIHVS DQELQSANAS VDDSRLEELK ATLPSPDKLP
GFKMYPIDFE KDDDSNFHMD FIVAASNLRA ENYDIPSADR HSKSLIAGKI IPAIATTTAA
VVGLVCLELY KVVQGHRLD SYKNGFLNLA LPFFGFSEPL AAPRHQYYNQ EWTLWDRFEV
QGLQPNGEEM TLKQFLDYFK TEHKLEITML SQGVSMLYSF FMPAAKLER LDQPMTEIVS
RVSKRKLGRH VRALVLELCC NDESGEDVEV PYVRYTIR

Characteristics: Human UBA1 full-length ORF (NP_003325.2, 1 a.a. - 1058 a.a.) recombinant protein with GST-tag at N-terminal.

Purification: in vitro wheat germ expression system

Target Details

Target: UBA1

Alternative Name: UBA1 ([UBA1 Products](#))

Background: Full Gene Name: ubiquitin-like modifier activating enzyme 1
Synonyms: A1S9,A1S9T,A1ST,AMCX1,GXP1,MGC4781,SMAX2,UBA1A,UBE1,UBE1X

Gene ID: 7317

NCBI Accession: [NM_003334](#)

Application Details

Application Notes: Optimal working dilution should be determined by the investigator.

Comment: Preparation method: in vitro, wheat germ expression system
Product Quality tested by: 12.5% SDS-PAGE Stained with Coomassie Blue.

Restrictions: For Research Use only

Handling

Buffer: 50 mM Tris-HCl, 10 mM reduced Glutathione, pH =8.0 in the elution buffer.

Handling Advice: Aliquot to avoid repeated freezing and thawing.

Storage: -80 °C

Storage Comment: Best use within three months from the date of receipt of this protein.

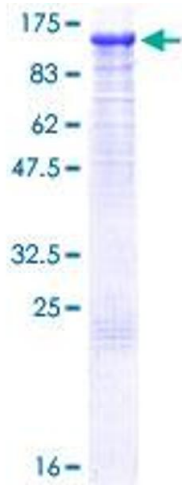


Image 1.