

Datasheet for ABIN1324430  
**UBE3B Protein (AA 118-225) (GST tag)**



[Go to Product page](#)

1 Image

Overview

Quantity:	2 µg
Target:	UBE3B
Protein Characteristics:	AA 118-225
Origin:	Human
Source:	Wheat germ
Protein Type:	Recombinant
Purification tag / Conjugate:	This UBE3B protein is labelled with GST tag.
Application:	ELISA, Western Blotting (WB), Antibody Array (AA), Affinity Purification (AP)

Product Details

Purpose:	UBE3B (Human) Recombinant Protein (Q01)
Sequence:	VSLACSKDLT LLWIIQIKNI LWYCCDFLKQ LKPEILQDSR LITLYLTMLV TFTDTSTWKI LRGKGESLRP AMNHICANIM GHLNQHGfYS VLQILLTRGL ARPRPCLS
Characteristics:	Human UBE3B partial ORF ( NP_542783, 118 a.a. - 225 a.a.) recombinant protein with GST-tag at N-terminal.
Purification:	in vitro wheat germ expression system

Target Details

Target:	UBE3B
Alternative Name:	UBE3B ( <a href="#">UBE3B Products</a> )

## Target Details

Background:	Full Gene Name: ubiquitin protein ligase E3B Synonyms: DKFZp586K2123,DKFZp686A1051,FLJ45294,MGC131858,MGC78388
Gene ID:	89910
NCBI Accession:	<a href="#">NM_130466</a>

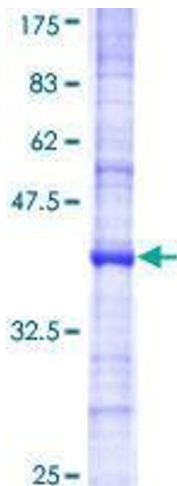
## Application Details

Application Notes:	Optimal working dilution should be determined by the investigator.
Comment:	Preparation method: in vitro, wheat germ expression system Product Quality tested by: 12.5% SDS-PAGE Stained with Coomassie Blue.
Restrictions:	For Research Use only

## Handling

Buffer:	50 mM Tris-HCl, 10 mM reduced Glutathione, pH =8.0 in the elution buffer.
Handling Advice:	Aliquot to avoid repeated freezing and thawing.
Storage:	-80 °C
Storage Comment:	Best use within three months from the date of receipt of this protein.

## Images



**Image 1.**