



[Go to Product page](#)

Datasheet for ABIN1324541

UEVLD Protein (AA 1-357) (GST tag)

1 Image

Overview

Quantity:	10 µg
Target:	UEVLD
Protein Characteristics:	AA 1-357
Origin:	Human
Source:	Wheat germ
Protein Type:	Recombinant
Purification tag / Conjugate:	This UEVLD protein is labelled with GST tag.
Application:	ELISA, Western Blotting (WB), Antibody Array (AA), Affinity Purification (AP)

Product Details

Purpose:	UEV3 (Human) Recombinant Protein (P01)
Sequence:	MEFDCEGLRR LLGKYKFRDL TVEELRNVNV FFPHFKYSMD TYGNTYNIPI RFWILDSHPF APPICFLKPT ANMGILVGKH VDAQGRIYLP YLQNWSHPKS VIVGLIKEMI AKFQEELPMY SLSSSDEARQ VDLLAYIAKI TEGVSDTNSK SWANHENKTV NKITVVGSGGE LGIACTLAIS AKGIADRLVL LDLSEGTKGA TMDLEIFNLP NVEISKDLSA SAHSKVVIFT VNSLGSSQSY LDVVQSNVDM FRALVPALGH YSQHSVLLVA SQPVEIMTYV TWKLSTFPAN RVIGIGCNLD SQRLQYIITN VLKAQTSQKE VWVIGEQGED KVLWVSGQEE VVSHTSQVQL SNRDIMI
Characteristics:	Human UEV3 full-length ORF (AAH64566.1, 1 a.a. - 357 a.a.) recombinant protein with GST-tag at N-terminal.
Purification:	in vitro wheat germ expression system

Target Details

Target:	UEVLD
Alternative Name:	UEVLD (UEVLD Products)
Background:	Full Gene Name: UEV and lactate/malate dehydrogenase domains Synonyms: ATTP,FLJ11068,UEV3
Gene ID:	55293

Application Details

Application Notes:	Optimal working dilution should be determined by the investigator.
Comment:	Preparation method: in vitro, wheat germ expression system Product Quality tested by: 12.5% SDS-PAGE Stained with Coomassie Blue.
Restrictions:	For Research Use only

Handling

Buffer:	50 mM Tris-HCl, 10 mM reduced Glutathione, pH =8.0 in the elution buffer.
Handling Advice:	Aliquot to avoid repeated freezing and thawing.
Storage:	-80 °C
Storage Comment:	Best use within three months from the date of receipt of this protein.

Images

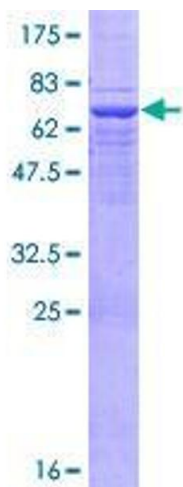


Image 1.