

Datasheet for ABIN1324543

UEVLD Protein (AA 281-379) (GST tag)



[Go to Product page](#)

1 Image

Overview

Quantity:	10 µg
Target:	UEVLD
Protein Characteristics:	AA 281-379
Origin:	Human
Source:	Wheat germ
Protein Type:	Recombinant
Purification tag / Conjugate:	This UEVLD protein is labelled with GST tag.
Application:	ELISA, Western Blotting (WB), Antibody Array (AA), Affinity Purification (AP)

Product Details

Purpose:	UEV3 (Human) Recombinant Protein (Q01)
Sequence:	GHYSQHSVLL VASQPVEIMT YVTWKLSTFP ANRVIGIGCN LDSQRLQYII TNVLKAQTSG KEVWVIGEQQ EDKVLTWGSGQ EEVSHTSQV QLSNRDIMI
Characteristics:	Human UEV3 partial ORF (NP_060784.2, 281 a.a. - 379 a.a.) recombinant protein with GST-tag at N-terminal.
Purification:	in vitro wheat germ expression system

Target Details

Target:	UEVLD
Alternative Name:	UEVLD (UEVLD Products)

Target Details

Background:	Full Gene Name: UEV and lactate/malate dehydrogenase domains Synonyms: ATTP,FLJ11068,UEV3
Gene ID:	55293
NCBI Accession:	NM_018314

Application Details

Application Notes:	Optimal working dilution should be determined by the investigator.
Comment:	Preparation method: in vitro, wheat germ expression system Product Quality tested by: 12.5% SDS-PAGE Stained with Coomassie Blue.
Restrictions:	For Research Use only

Handling

Buffer:	50 mM Tris-HCl, 10 mM reduced Glutathione, pH =8.0 in the elution buffer.
Handling Advice:	Aliquot to avoid repeated freezing and thawing.
Storage:	-80 °C
Storage Comment:	Best use within three months from the date of receipt of this protein.

Images

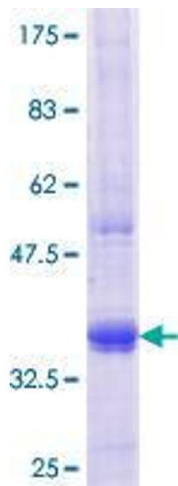


Image 1.