

Datasheet for ABIN1324551  
**UFL1 Protein (AA 1-509) (GST tag)**



[Go to Product page](#)

1 Image

## Overview

Quantity:	25 µg
Target:	UFL1
Protein Characteristics:	AA 1-509
Origin:	Human
Source:	Wheat germ
Protein Type:	Recombinant
Purification tag / Conjugate:	This UFL1 protein is labelled with GST tag.
Application:	ELISA, Western Blotting (WB), Antibody Array (AA), Affinity Purification (AP)

## Product Details

Purpose:	UFL1 (Human) Recombinant Protein (P01)
Sequence:	MADAWEEIRR LAADFQRAQF AEATQRLSER NCIEIVNKLI AQKQLEVVHT LDGKEYITPA QISKEMRDEL HVRGGRVNIV DLQQVINVDL IHENRIGDI IKSEKHVQLV LGQLIDENYL DRLAAEEVNDK LQESGQVTIS ELCKTYDLPG NFLTQALTQR LGRIISGHID LDNRGVIFTE AFVARHKARI RGLFSAITRP TAVNSLISKY GFQEQLLYSV LEELVNSGRL RGTVVGGRQD KAVFVPDIYS RTQSTWVDSF FRQNGYLEFD ALSRLGIPDA VSYIKKRYKT TQLLFLKAAC VGQGLVDQVE ASVEEAISSG TWVDIAPLLP TSLSVEDAAI LLQQVMRAFS KQASTVVFSD TVVVSEKFIN DCTELFRELH HQKAEKEMKN NPVHLITEED LKQISTLESV STSKKDKKDE RRRKATEGSG SMRGGGGGNA REYKIKKVKK KGRKDDDSDD ESQSSHTGKK KPEISFMFQD EIEDFLRKHI QDAPEEFISE LAEYLIKQV
Characteristics:	Human UFL1 full-length ORF ( AAH28608.1, 1 a.a. - 509 a.a.) recombinant protein with GST-tag at N-terminal.

## Product Details

---

Purification: in vitro wheat germ expression system

## Target Details

---

Target: UFL1

Alternative Name: UFL1 ([UFL1 Products](#))

Background: Full Gene Name: UFM1-specific ligase 1  
Synonyms: KIAA0776,Maxer,NLBP,RCAD,RP3-393D12.1

Gene ID: 23376

## Application Details

---

Application Notes: Optimal working dilution should be determined by the investigator.

Comment: Preparation method: in vitro, wheat germ expression system  
Product Quality tested by: 12.5% SDS-PAGE Stained with Coomassie Blue.

Restrictions: For Research Use only

## Handling

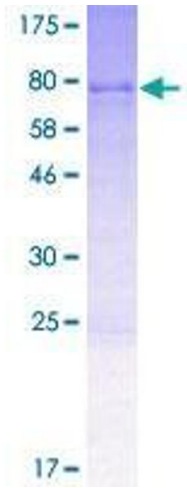
---

Buffer: 50 mM Tris-HCl, 10 mM reduced Glutathione, pH =8.0 in the elution buffer.

Handling Advice: Aliquot to avoid repeated freezing and thawing.

Storage: -80 °C

Storage Comment: Best use within three months from the date of receipt of this protein.



**Image 1.**