



Datasheet for ABIN1324571

## UGT1A10 Protein (AA 1-530) (GST tag)



[Go to Product page](#)

### 1 Image

#### Overview

Quantity:	10 µg
Target:	UGT1A10
Protein Characteristics:	AA 1-530
Origin:	Human
Source:	Wheat germ
Protein Type:	Recombinant
Purification tag / Conjugate:	This UGT1A10 protein is labelled with GST tag.
Application:	ELISA, Western Blotting (WB), Antibody Array (AA), Affinity Purification (AP)

#### Product Details

Purpose:	UGT1A10 (Human) Recombinant Protein (P01)
Sequence:	MARAGWTSPV PLCVCLLLTC GFAEAGKLLV VPMDGSHWFT MQSVVEKLIL RGHEVVVVMP EVSQQLERSL NCTVKTYSTS YTLEDQNREF MVFAHAQWKA RAQSIFSLLM SSSSGFLDLF FSHCRLSFLND RKLVEYLKES SFDAVFLDPF DTCGLIVAKY FSLPSVVFTR GIFCHHLEEG AQCPAPLSYV PNDLLGFSDA MTFKERVWNH IVHLEDHLFC QYLFRNALEI ASEILQTPVT AYDLYSHTSI WLLRTDFVLD YPKPVMNMI FIGGINCHQG KPLPMEFEAY INASGEHGIV VFSLGSMVSE IPEKKAMAIA DALGKIPQTV LWRYTGTRPS NLANNITLVK WLPQNDLLGH PMTRAFITHA GSHGVYESIC NGVPMVMMP LFGDQMDNAKR METKGAGVTL NVLEMTSEDL ENALKAVIND KSYKENIMRL SSLHKDRPVE PLDLAVFWVE FVMRHKGAPH LRPAAHDLTW YQYHSLDVIG FLLAVLTV FITFKCCAYG YRKCLGKKGR VKKAHKSPTH
Characteristics:	Human UGT1A10 full-length ORF ( AAH20971, 1 a.a. - 530 a.a.) recombinant protein with GST-tag at N-terminal.

## Product Details

---

Purification: in vitro wheat germ expression system

## Target Details

---

Target: UGT1A10

Alternative Name: UGT1A10 ([UGT1A10 Products](#))

Background: Gene: UDP glucuronosyltransferase 1 family, polypeptide A10  
Synonyms: UDPGT, UGT1J

Gene ID: 54575

Pathways: [Steroid Hormone Biosynthesis, Regulation of Lipid Metabolism by PPARalpha](#)

## Application Details

---

Application Notes: Optimal working dilution should be determined by the investigator.

Restrictions: For Research Use only

## Handling

---

Buffer: 50 mM Tris-HCl, 10 mM reduced Glutathione, pH =8.0 in the elution buffer.

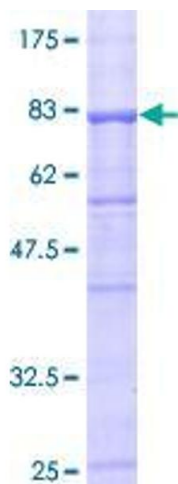
Handling Advice: Aliquot to avoid repeated freezing and thawing.

Storage: -80 °C

Storage Comment: Best use within three months from the date of receipt of this protein.

## Images

---



**Image 1.**