

Datasheet for ABIN1324598  
**UGT3A2 Protein (AA 1-523) (GST tag)**



[Go to Product page](#)

1 Image

## Overview

Quantity:	10 µg
Target:	UGT3A2
Protein Characteristics:	AA 1-523
Origin:	Human
Source:	Wheat germ
Protein Type:	Recombinant
Purification tag / Conjugate:	This UGT3A2 protein is labelled with GST tag.
Application:	ELISA, Western Blotting (WB), Antibody Array (AA), Affinity Purification (AP)

## Product Details

Purpose:	UGT3A2 (Human) Recombinant Protein (P01)
Sequence:	MAGQRVLLLV GFLLPGVLLS EAAKILTIST VGGSHYLLMD RVSQILQDHG HNVTMLNHKR GPFMPDFKKE EKSQYQISWL APEDHQREFK KSFDFEET LGGRGKFENL LNVLEYLALQ CSHFLNRKDI MDSLKNENFD MVIVETFDYC PFLIAEKLKGFVAILSTSF GSLEFGLPIP LSYVPVFRSL LTDHMDFWGR VKNFLMFFSF CRRQQHMST FDNTIKEHFT EGSRPVLSHL LLKAELWFIN SDAFDFARP LLPNTVYVGG LMEKPIKPVP QDLENFIAKF GDSGFVLVTL GSMVNTCQNP EIFKEMNNAF AHLPPQGVWK CQCSHWPKDV HLAANVKIVD WLPQSDLLAH PSIRLFVTHG GQNSIMEAIQ HGVPMVGIPL FGDQPENMVR VEAKKFGVSI QLKKLKAETL ALKMKQIMED KRYKSAAVAA SVILRSHPLS PTQRLVGWID HVLQTGGATH LKPYVFQQPW HEQYLLDVV FLLGLTLGTL WLCGKLLGMA VWWLRGARKV KET
Characteristics:	Human UGT3A2 full-length ORF ( AAI03925.1, 1 a.a. - 523 a.a.) recombinant protein with GST-tag at N-terminal.

## Product Details

---

Purification: in vitro wheat germ expression system

## Target Details

---

Target: UGT3A2

Alternative Name: UGT3A2 ([UGT3A2 Products](#))

Background: Full Gene Name: UDP glycosyltransferase 3 family, polypeptide A2  
Synonyms: MGC119426,MGC119429

Gene ID: 167127

## Application Details

---

Application Notes: Optimal working dilution should be determined by the investigator.

Comment: Preparation method: in vitro, wheat germ expression system  
Product Quality tested by: 12.5% SDS-PAGE Stained with Coomassie Blue.

Restrictions: For Research Use only

## Handling

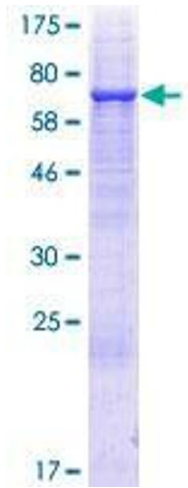
---

Buffer: 50 mM Tris-HCl, 10 mM reduced Glutathione, pH =8.0 in the elution buffer.

Handling Advice: Aliquot to avoid repeated freezing and thawing.

Storage: -80 °C

Storage Comment: Best use within three months from the date of receipt of this protein.



**Image 1.**