



[Go to Product page](#)

Datasheet for ABIN1324616

## ULBP1 Protein (AA 1-244) (GST tag)

### 1 Image

#### Overview

Quantity:	10 µg
Target:	ULBP1
Protein Characteristics:	AA 1-244
Origin:	Human
Source:	Wheat germ
Protein Type:	Recombinant
Purification tag / Conjugate:	This ULBP1 protein is labelled with GST tag.
Application:	ELISA, Western Blotting (WB), Antibody Array (AA), Affinity Purification (AP)

#### Product Details

Purpose:	ULBP1 (Human) Recombinant Protein (P01)
Sequence:	MAAAASPFL LCLPLLHLLS GWSRAGWVDL HCLCYDFIIT PKSRPEPQWC EVQGLVDERP FLHYDCVNHK AKAFASLGKK VNVTKTWEEQ TETLRDVVDF LKGQLLDIQV ENLIPIEPLT LQARMSCEHE AHGHGRGSWQ FLFNGQKFLF FDSNNRKWTA LHPGAKKMTE KWEKNRDVTM FFQKISLGDC KMWLEEFMY WEQMLDPTKP PSLAPGTTQP KAMATTLSPW SLLIIFLCFI LAGR
Characteristics:	Human ULBP1 full-length ORF ( NP_079494.1, 1 a.a. - 244 a.a.) recombinant protein with GST-tag at N-terminal.
Purification:	in vitro wheat germ expression system

#### Target Details

Target:	ULBP1
---------	-------

## Target Details

Alternative Name:	ULBP1 ( <a href="#">ULBP1 Products</a> )
Background:	Full Gene Name: UL16 binding protein 1 Synonyms: RAET11
Gene ID:	80329
NCBI Accession:	<a href="#">NM_025218</a>
Pathways:	<a href="#">Regulation of Leukocyte Mediated Immunity</a> , <a href="#">Positive Regulation of Immune Effector Process</a>

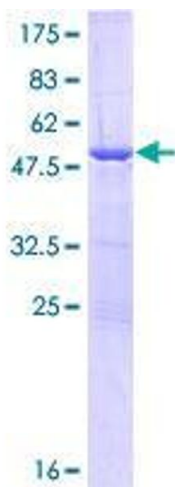
## Application Details

Application Notes:	Optimal working dilution should be determined by the investigator.
Comment:	Preparation method: in vitro, wheat germ expression system Product Quality tested by: 12.5% SDS-PAGE Stained with Coomassie Blue.
Restrictions:	For Research Use only

## Handling

Buffer:	50 mM Tris-HCl, 10 mM reduced Glutathione, pH =8.0 in the elution buffer.
Handling Advice:	Aliquot to avoid repeated freezing and thawing.
Storage:	-80 °C
Storage Comment:	Best use within three months from the date of receipt of this protein.

## Images



**Image 1.**