



[Go to Product page](#)

Datasheet for ABIN1324629

ULK4 Protein (AA 1-580) (GST tag)

2 Images

Overview

Quantity:	10 µg
Target:	ULK4 (ULK24)
Protein Characteristics:	AA 1-580
Origin:	Human
Source:	Wheat germ
Protein Type:	Recombinant
Purification tag / Conjugate:	This ULK4 protein is labelled with GST tag.
Application:	Western Blotting (WB), ELISA, Antibody Array (AA), Affinity Purification (AP), Kinase Activity Assay (KAA)

Product Details

Purpose:	ULK4 (Human) Recombinant Protein (P01)
Sequence:	MENFILYEEI GRGSKTVVYK GRRKGTINLV AILCTDKCKR PEITNWVRLT REIKHKNIIVT FHEWYETSNH LWLVVELCTG GSLKTVIAQD ENLPEDVVRE FGIDLISGLH HLHKLGLIFC DISPRKILLE GPGTLKFSNF CLAKVEGENL EEFALVAAE EGGDNGENV LKKSMSKSRVK GSPVYTAPEV VRGADFSISS DLWSLGCLLY EMFSGKPPFF SESISELTK ILCEDPLPPI PKDSSRPKAS SDFINLLDGL LQRDPQKRLT WTRLLQHSFW KKAFAGADQE SSVEDLSLSR NTMECSGPQD SKELLQNSQS RQAKGHKSGQ PLGHSFRLEN PTEFRPKSTL EGQLNESMFL LSSRPTPTS TAVEVSPGED MTHCSPQKTS PLTKITSGHL SQQDLESQMR ELIYTDSDLV VTPIIDNPKI MKQPPVKFDA KILHLPTYSV DKLLFLKDQD WNDFLQQVCS QIDSTESMG ASRAKLNLLC YLCVAGHQE VVTRLLHSPL FQLLIQHLRI APNWDIRAKV AHVIGLLASH TAEIQENTPV VETTSSIGIG ILNCLVQHST PVPRQCLVYV

Product Details

Characteristics: Human ULK4 full-length ORF (AAH14794, 1 a.a. - 580 a.a.) recombinant protein with GST-tag at N-terminal.

Purification: in vitro wheat germ expression system

Target Details

Target: ULK4 (ULK24)

Alternative Name: ULK4 ([ULK24 Products](#))

Background: Full Gene Name: unc-51-like kinase 4 (C. elegans)
Synonyms: DKFZp434E1822,FAM7C1,FLJ20574,REC01035

Gene ID: 54986

Application Details

Application Notes: Optimal working dilution should be determined by the investigator.

Comment: Preparation method: in vitro, wheat germ expression system
Product Quality tested by: 12.5% SDS-PAGE Stained with Coomassie Blue.

Restrictions: For Research Use only

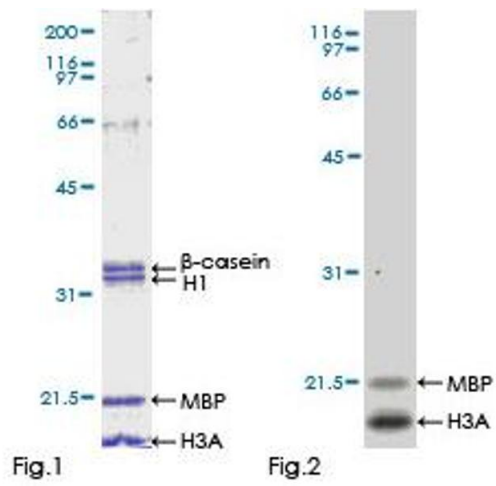
Handling

Buffer: 50 mM Tris-HCl, 10 mM reduced Glutathione, pH =8.0 in the elution buffer.

Handling Advice: Aliquot to avoid repeated freezing and thawing.

Storage: -80 °C

Storage Comment: Best use within three months from the date of receipt of this protein.



Kinase Activity Assay

Image 1.

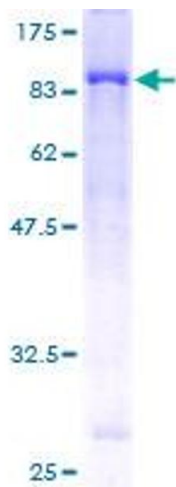


Image 2.