



Datasheet for ABIN1324769  
**USP21 Protein (AA 1-565) (GST tag)**



[Go to Product page](#)

**1** Image

Overview

Quantity:	10 µg
Target:	USP21
Protein Characteristics:	AA 1-565
Origin:	Human
Source:	Wheat germ
Protein Type:	Recombinant
Purification tag / Conjugate:	This USP21 protein is labelled with GST tag.
Application:	ELISA, Western Blotting (WB), Antibody Array (AA), Affinity Purification (AP)

Product Details

Purpose:	USP21 (Human) Recombinant Protein (P01)
Sequence:	MPQASEHRLG RTREPPVNIQ PRVGSKLPGA PRARSKERRN PGSGPNPMLR PLPPRPGLPD ERLKKLELGR GRTSGPRPRG PLRADHGVPL PGSPPTVAL PLPSRTNLAR SKSVSSGDLR PMGIALGGHR GTGELGAALS RLALRPEPPT LRRSTLRRLL GGFPGPPTLF SIRTEPPASH GSFHMISARS SEPFYSDDKM AHHTLLLGSV HVGLRNLGNT CFLNAVQLQCL SSTRPLRDFC LRRDFRQEVV GGGRAQELTE AFADVIGALW HPDSCEAVNP TRFRAVFQKY VPSFSGYSQQ DAQEFLKLLM ERLHLEINRR GRRAPPILAN GPVPSPPRRG GALLEEPELS DDDRANLMWK RYLEREDSKI VDLFVQQLKS CLKCQACGYR STTFEVFCDL SLPIPKKGFA GGVSLRDCF NLFTKEEEL SENAPVCDRC RQKTRSTKKL TVQRFPRILV LHLNRFASR GSIKKSSVGV DFPLQRLSLG DFASDKAGSP VYQLYALCNH SGSVHYGHYT ALCRCQTGWH VYNDSTRVSPV SENQVASSEG YVLFYQLMQE PPRCL
Characteristics:	Human USP21 full-length ORF ( AAH90946.1, 1 a.a. - 565 a.a.) recombinant protein with GST-

## Product Details

---

tag at N-terminal.

Purification: in vitro wheat germ expression system

## Target Details

---

Target: USP21

Alternative Name: USP21 ([USP21 Products](#))

Background: Full Gene Name: ubiquitin specific peptidase 21  
Synonyms: MGC3394,USP16,USP23

Gene ID: 27005

## Application Details

---

Application Notes: Optimal working dilution should be determined by the investigator.

Comment: Preparation method: in vitro, wheat germ expression system  
Product Quality tested by: 12.5% SDS-PAGE Stained with Coomassie Blue.

Restrictions: For Research Use only

## Handling

---

Buffer: 50 mM Tris-HCl, 10 mM reduced Glutathione, pH =8.0 in the elution buffer.

Handling Advice: Aliquot to avoid repeated freezing and thawing.

Storage: -80 °C

Storage Comment: Best use within three months from the date of receipt of this protein.

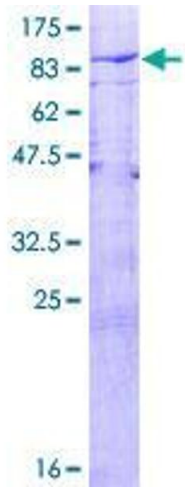


Image 1.