



[Go to Product page](#)

Datasheet for ABIN1324850

USPL1 Protein (AA 975-1074) (GST tag)

1 Image

Overview

Quantity:	10 µg
Target:	USPL1
Protein Characteristics:	AA 975-1074
Origin:	Human
Source:	Wheat germ
Protein Type:	Recombinant
Purification tag / Conjugate:	This USPL1 protein is labelled with GST tag.
Application:	ELISA, Western Blotting (WB), Antibody Array (AA), Affinity Purification (AP)

Product Details

Purpose:	C13orf22 (Human) Recombinant Protein (Q01)
Sequence:	LLSPTPVSTE LSENGEGDFR YLGMGDSHIP PVPSEFNDV SQNTHLRQDH NYCSPTKKNP CEVQPDSL TN NACVRTL NLE SPMKTDIFDE FFSSSALNAL
Characteristics:	Human C13orf22 partial ORF (NP_005791, 975 a.a. - 1074 a.a.) recombinant protein with GST-tag at N-terminal.
Purification:	in vitro wheat germ expression system

Target Details

Target:	USPL1
Alternative Name:	USPL1 (USPL1 Products)

Target Details

Background:	Full Gene Name: ubiquitin specific peptidase like 1 Synonyms: C13orf22,D13S106E,DKFZp781K2286,FLJ32952,RP11-121019.1,bA121019.1
Gene ID:	10208
NCBI Accession:	NM_005800

Application Details

Application Notes:	Optimal working dilution should be determined by the investigator.
Comment:	Preparation method: in vitro, wheat germ expression system Product Quality tested by: 12.5% SDS-PAGE Stained with Coomassie Blue.
Restrictions:	For Research Use only

Handling

Buffer:	50 mM Tris-HCl, 10 mM reduced Glutathione, pH =8.0 in the elution buffer.
Handling Advice:	Aliquot to avoid repeated freezing and thawing.
Storage:	-80 °C
Storage Comment:	Best use within three months from the date of receipt of this protein.

Images

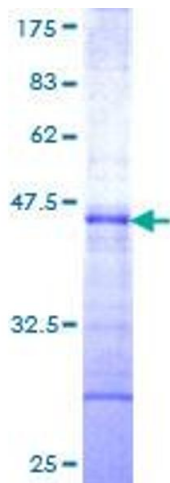


Image 1.