

Datasheet for ABIN1324869

Utrophin Protein (UTRN) (AA 3328-3433) (GST tag)



[Go to Product page](#)

1 Image

Overview

Quantity:	10 µg
Target:	Utrophin (UTRN)
Protein Characteristics:	AA 3328-3433
Origin:	Human
Source:	Wheat germ
Protein Type:	Recombinant
Purification tag / Conjugate:	This Utrophin protein is labelled with GST tag.
Application:	Western Blotting (WB), Antibody Array (AA), Affinity Purification (AP), ELISA

Product Details

Purpose:	UTRN (Human) Recombinant Protein (Q01)
Sequence:	LEARMQILED HNKQLESQ LHLRLRQLLEQPE SDSRINGVSP WASPQHSALS YSLDPDASGP QFHQAAGEDL LAPPDHTSTD LTEVMEQIHS TFPSCCPNVP SRPQAM
Characteristics:	Human UTRN partial ORF (NP_009055, 3328 a.a. - 3433 a.a.) recombinant protein with GST-tag at N-terminal.
Purification:	in vitro wheat germ expression system

Target Details

Target:	Utrophin (UTRN)
Alternative Name:	UTRN (UTRN Products)

Target Details

Background: Full Gene Name: utrophin
Synonyms: DMDL,DRP,DRP1,FLJ23678

Gene ID: 7402

NCBI Accession: [NM_007124](#)

Pathways: [Skeletal Muscle Fiber Development](#)

Application Details

Application Notes: Optimal working dilution should be determined by the investigator.

Comment: Preparation method: in vitro, wheat germ expression system
Product Quality tested by: 12.5% SDS-PAGE Stained with Coomassie Blue.

Restrictions: For Research Use only

Handling

Buffer: 50 mM Tris-HCl, 10 mM reduced Glutathione, pH =8.0 in the elution buffer.

Handling Advice: Aliquot to avoid repeated freezing and thawing.

Storage: -80 °C

Storage Comment: Best use within three months from the date of receipt of this protein.

Images

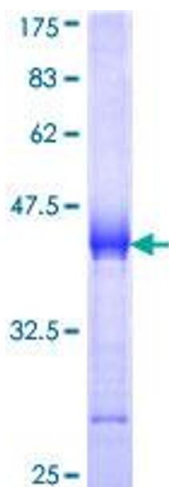


Image 1.