



[Go to Product page](#)

Datasheet for ABIN1324986

## VEGFC Protein (AA 112-227) (GST tag)

### 1 Image

#### Overview

Quantity:	10 µg
Target:	VEGFC
Protein Characteristics:	AA 112-227
Origin:	Human
Source:	Wheat germ
Protein Type:	Recombinant
Purification tag / Conjugate:	This VEGFC protein is labelled with GST tag.
Application:	Western Blotting (WB), ELISA, Antibody Array (AA), Affinity Purification (AP)

#### Product Details

Purpose:	VEGFC (Human) Recombinant Protein (Q01)
Sequence:	AHYNTEILKS IDNEWRTQC MPREVCIDVG KEFGVATNTF FKPPCVSVYR CGGCCNSEGL QCMNTSTSYL SKTLFEITVP LSQGPKPVTI SFANHTSCRC MSKLDVYRQV HSIIRR
Characteristics:	Human VEGFC partial ORF ( NP_005420, 112 a.a. - 227 a.a.) recombinant protein with GST-tag at N-terminal.
Purification:	in vitro wheat germ expression system

#### Target Details

Target:	VEGFC
Alternative Name:	VEGFC ( <a href="#">VEGFC Products</a> )

## Target Details

Background: Full Gene Name: vascular endothelial growth factor C  
Synonyms: Flt4-L,VRP

Gene ID: 7424

NCBI Accession: [NM\\_005429](#)

Pathways: [RTK Signaling](#), [Signaling Events mediated by VEGFR1 and VEGFR2](#)

## Application Details

Application Notes: Optimal working dilution should be determined by the investigator.

Comment: Preparation method: in vitro, wheat germ expression system  
Product Quality tested by: 12.5% SDS-PAGE Stained with Coomassie Blue.

Restrictions: For Research Use only

## Handling

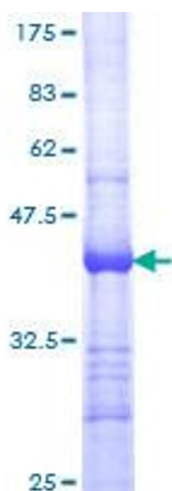
Buffer: 50 mM Tris-HCl, 10 mM reduced Glutathione, pH =8.0 in the elution buffer.

Handling Advice: Aliquot to avoid repeated freezing and thawing.

Storage: -80 °C

Storage Comment: Best use within three months from the date of receipt of this protein.

## Images



**Image 1.**