

Datasheet for ABIN1324990
VGLL1 Protein (AA 1-258) (GST tag)



[Go to Product page](#)

1 Image

Overview

Quantity:	10 µg
Target:	VGLL1
Protein Characteristics:	AA 1-258
Origin:	Human
Source:	Wheat germ
Protein Type:	Recombinant
Purification tag / Conjugate:	This VGLL1 protein is labelled with GST tag.
Application:	ELISA, Western Blotting (WB), Antibody Array (AA), Affinity Purification (AP)

Product Details

Purpose:	VGLL1 (Human) Recombinant Protein (P01)
Sequence:	MEEMKKTAIR LPKGGKQKPIK TEWNSRCVLF TYFQGDISSV VDEHFSRALS NIKSPQELTP SSQSEGVMMLK NDDISPNQW RYSSPWTKPQ PEVPVTNRAA NCNLHVPGPM AVNQFSPSLA RRASVRPGEL WHFSSLAGTS SLEPGYSHPF PARHLVPEPQ PDGKREPLLS LLQQDRCLAR PQESAARENG NPGQIAGSTG LLFNLPPGSV HYKKLYVSRG SASTSLPNET LSELETPGKY SLTPPNHWGH PHRYLQHL
Characteristics:	Human VGLL1 full-length ORF (AAH03362, 1 a.a. - 258 a.a.) recombinant protein with GST-tag at N-terminal.
Purification:	in vitro wheat germ expression system

Target Details

Target:	VGLL1
Alternative Name:	VGLL1 (VGLL1 Products)
Background:	Full Gene Name: vestigial like 1 (Drosophila) Synonyms: TDU,VGL1
Gene ID:	51442

Application Details

Application Notes:	Optimal working dilution should be determined by the investigator.
Comment:	Preparation method: in vitro, wheat germ expression system Product Quality tested by: 12.5% SDS-PAGE Stained with Coomassie Blue.
Restrictions:	For Research Use only

Handling

Buffer:	50 mM Tris-HCl, 10 mM reduced Glutathione, pH =8.0 in the elution buffer.
Handling Advice:	Aliquot to avoid repeated freezing and thawing.
Storage:	-80 °C
Storage Comment:	Best use within three months from the date of receipt of this protein.

Images

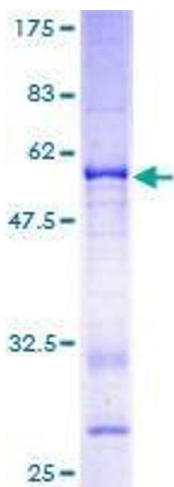


Image 1.