



[Go to Product page](#)

Datasheet for ABIN1325000

VHL Protein (AA 1-172) (GST tag)

1 Image

1 Publication

Overview

Quantity:	10 µg
Target:	VHL
Protein Characteristics:	AA 1-172
Origin:	Human
Source:	Wheat germ
Protein Type:	Recombinant
Purification tag / Conjugate:	This VHL protein is labelled with GST tag.
Application:	Western Blotting (WB), ELISA, Affinity Purification (AP), Antibody Array (AA)

Product Details

Purpose:	VHL (Human) Recombinant Protein (P01)
Sequence:	MPRRAENWDE AEVGAE EAGV EEYGPEEDGG EESGAEESGP EESGPEELGA EEEMEAGRPR PVLRSVNSRE PSQVIFCNRS PRVVLVWLN FDGEPQPYPT LPPGTGRRIH SYRVYTLKER CLQVVRSLVK PENYRRLDIV RSLYEDLEDH PNVQKDLERL TQERIAHQRM GD
Characteristics:	Human VHL full-length ORF (ENSP00000344757, 1 a.a. - 172 a.a.) recombinant protein with GST-tag at N-terminal.
Purification:	in vitro wheat germ expression system

Target Details

Target:	VHL
Alternative Name:	VHL (VHL Products)

Target Details

Background:	Full Gene Name: von Hippel-Lindau tumor suppressor Synonyms: HRCA1,RCA1,VHL1
Gene ID:	7428
Pathways:	Tube Formation, Signaling Events mediated by VEGFR1 and VEGFR2, Ubiquitin Proteasome Pathway

Application Details

Application Notes:	Optimal working dilution should be determined by the investigator.
Comment:	Preparation method: in vitro, wheat germ expression system Product Quality tested by: 12.5% SDS-PAGE Stained with Coomassie Blue.
Restrictions:	For Research Use only

Handling

Buffer:	50 mM Tris-HCl, 10 mM reduced Glutathione, pH =8.0 in the elution buffer.
Handling Advice:	Aliquot to avoid repeated freezing and thawing.
Storage:	-80 °C
Storage Comment:	Best use within three months from the date of receipt of this protein.

Publications

Product cited in:	Kim, Lee, Jang, Yi, Kim, Han, Lee, Tong, Vincelette, Gao, Yin, Evans, Choi, Qin, Liu, Zhang, Deng, Jen, Zhang, Wang, Lou: "WSB1 promotes tumor metastasis by inducing pVHL degradation." in: Genes & development , Vol. 29, Issue 21, pp. 2244-57, (2015) (PubMed).
-------------------	--

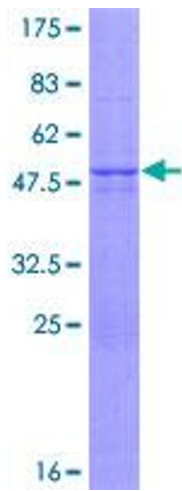


Image 1.