



[Go to Product page](#)

Datasheet for ABIN1325023

## Vitrin Protein (VIT) (AA 1-203) (GST tag)

### 1 Image

#### Overview

Quantity:	25 µg
Target:	Vitrin (VIT)
Protein Characteristics:	AA 1-203
Origin:	Human
Source:	Wheat germ
Protein Type:	Recombinant
Purification tag / Conjugate:	This Vitrin protein is labelled with GST tag.
Application:	ELISA, Western Blotting (WB), Antibody Array (AA), Affinity Purification (AP)

#### Product Details

Purpose:	VIT (Human) Recombinant Protein (P01)
Sequence:	MRTVVLTMKA SVIEMFLVLL VTGVHSNKET AKKIKRPKFT VPQINCDVKA GKIIDPEFIV KCPAGCQDPK YHVYGTDVYA SYSSVCGAAV HSGVLDNSGG KILVRKVAGQ SGYKGSYSNG VQSLSLPRWR ESFIVLESKP KKGVTYPSAL TYSSSKSPAA QAGKCSRVIE SKPSESMNTR RVLGDSGEIN ILTGQAPLAL AIF
Characteristics:	Human VIT full-length ORF ( AAH61519.1, 1 a.a. - 203 a.a.) recombinant protein with GST-tag at N-terminal.
Purification:	in vitro wheat germ expression system

#### Target Details

Target:	Vitrin (VIT)
---------	--------------

## Target Details

---

Alternative Name:	VIT ( <a href="#">VIT Products</a> )
Background:	Full Gene Name: vitrin Synonyms: DKFZp313L1517,MGC149746,MGC70561
Gene ID:	5212

## Application Details

---

Application Notes:	Optimal working dilution should be determined by the investigator.
Comment:	Preparation method: in vitro, wheat germ expression system Product Quality tested by: 12.5% SDS-PAGE Stained with Coomassie Blue.
Restrictions:	For Research Use only

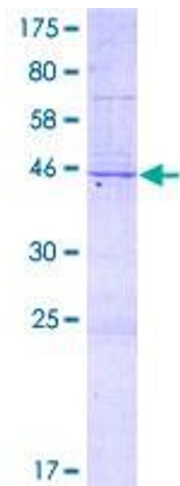
## Handling

---

Buffer:	50 mM Tris-HCl, 10 mM reduced Glutathione, pH =8.0 in the elution buffer.
Handling Advice:	Aliquot to avoid repeated freezing and thawing.
Storage:	-80 °C
Storage Comment:	Best use within three months from the date of receipt of this protein.

## Images

---



**Image 1.**