

Datasheet for ABIN1325052

CHMP3 Protein (AA 1-222) (GST tag)



[Go to Product page](#)

1 Image

Overview

Quantity:	10 µg
Target:	CHMP3
Protein Characteristics:	AA 1-222
Origin:	Human
Source:	Wheat germ
Protein Type:	Recombinant
Purification tag / Conjugate:	This CHMP3 protein is labelled with GST tag.
Application:	ELISA, Western Blotting (WB), Antibody Array (AA), Affinity Purification (AP)

Product Details

Purpose:	VPS24 (Human) Recombinant Protein (P01)
Sequence:	MGLFGKTQEK PPKELVNEWS LKIRKEMRVV DRQIRDIQRE EEKVKRSVKD AAKKGQKDVC IVLAKEMIRS RKAWSKLYAS KAHMNSVLMG MKNQLAVLRV AGSLQKSTEV MKAMQSLVKI PEIQATMREL SKEMMKAGII EEMLEDTFES MDDQEEMEEE AEMEIDRILF EITAGALGKA PSKVTDALPE PEPPGAMAAS EDEEEEEEEAL EAMQSRLATL RS
Characteristics:	Human VPS24 full-length ORF (NP_057163.1, 1 a.a. - 222 a.a.) recombinant protein with GST-tag at N-terminal.
Purification:	in vitro wheat germ expression system

Target Details

Target:	CHMP3
---------	-------

Target Details

Alternative Name:	VPS24 (CHMP3 Products)
Background:	Full Gene Name: vacuolar protein sorting 24 homolog (<i>S. cerevisiae</i>) Synonyms: CGI-149,CHMP3,NEDF
Gene ID:	51652
NCBI Accession:	NM_016079

Application Details

Application Notes:	Optimal working dilution should be determined by the investigator.
Comment:	Preparation method: in vitro, wheat germ expression system Product Quality tested by: 12.5% SDS-PAGE Stained with Coomassie Blue.
Restrictions:	For Research Use only

Handling

Buffer:	50 mM Tris-HCl, 10 mM reduced Glutathione, pH =8.0 in the elution buffer.
Handling Advice:	Aliquot to avoid repeated freezing and thawing.
Storage:	-80 °C
Storage Comment:	Best use within three months from the date of receipt of this protein.

Images

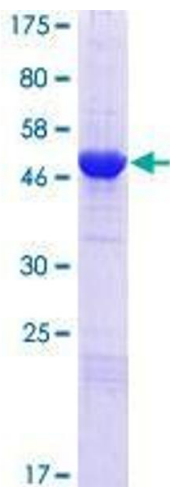


Image 1.