



[Go to Product page](#)

Datasheet for ABIN1325120

VSIG1 Protein (AA 1-387) (GST tag)

1 Image

Overview

Quantity:	10 µg
Target:	VSIG1
Protein Characteristics:	AA 1-387
Origin:	Human
Source:	Wheat germ
Protein Type:	Recombinant
Purification tag / Conjugate:	This VSIG1 protein is labelled with GST tag.
Application:	ELISA, Western Blotting (WB), Antibody Array (AA), Affinity Purification (AP)

Product Details

Purpose:	VSIG1 (Human) Recombinant Protein (P01)
Sequence:	MVFAFWKVFL ILSCLAGQVS VVQVTIPDGF VNVTVGSNVT LICITYTTTVA SREQLSIQWS FFHKKEMEPI SIYFSQGGQA VAIGQFKDRI TGSNDPGNAS ITISHMQPAD SGIYICDVNN PPDFLGQNQG ILNVSVLVKP SKPLCSVQGR PETGHTISLS CLSALGTPSP VYYWHKLEGR DIVPVKENFN PTTGILVIGN LTNFEQGYQ CTAINRLGNS SCEIDLTSSH PEVGIIVGAL IGSLVGAII ISVVCFARNK AKAKAKERNS KTIAELEPMT KINPRGESEA MPREDATQLE VTLPSSIHET GPDTIQEPDY EPKPTQEPAP EPAPGSEPMA VPDLDIELEL EPETQSELEP EPEPEPESEP GVVVEPLSED EKGVVKA
Characteristics:	Human VSIG1 full-length ORF (NP_872413.1, 1 a.a. - 387 a.a.) recombinant protein with GST-tag at N-terminal.
Purification:	in vitro wheat germ expression system

Target Details

Target:	VSIG1
Alternative Name:	VSIG1 (VSIG1 Products)
Background:	Full Gene Name: V-set and immunoglobulin domain containing 1 Synonyms: 1700062D20Rik,GPA34,MGC44287,dJ889N15.1
Gene ID:	340547
NCBI Accession:	NM_182607

Application Details

Application Notes:	Optimal working dilution should be determined by the investigator.
Comment:	Preparation method: in vitro, wheat germ expression system Product Quality tested by: 12.5% SDS-PAGE Stained with Coomassie Blue.
Restrictions:	For Research Use only

Handling

Buffer:	50 mM Tris-HCl, 10 mM reduced Glutathione, pH =8.0 in the elution buffer.
Handling Advice:	Aliquot to avoid repeated freezing and thawing.
Storage:	-80 °C
Storage Comment:	Best use within three months from the date of receipt of this protein.

Images

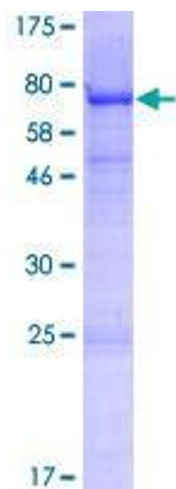


Image 1.