



[Go to Product page](#)

Datasheet for ABIN1325122

## VSNL1 Protein (AA 1-191) (GST tag)

### 1 Image

#### Overview

Quantity:	10 µg
Target:	VSNL1
Protein Characteristics:	AA 1-191
Origin:	Human
Source:	Wheat germ
Protein Type:	Recombinant
Purification tag / Conjugate:	This VSNL1 protein is labelled with GST tag.
Application:	Western Blotting (WB), ELISA, Antibody Array (AA), Affinity Purification (AP)

#### Product Details

Purpose:	VSNL1 (Human) Recombinant Protein (P01)
Sequence:	MGKQNSKLAP EVMEDLVKST EFNEHELKQW YKGFLKDCPS GRLNLEEFQQ LYVKFFPYGD ASKFAQHAFR TFDKNGDGTI DFREFICALS ITSRGSFEQK LNWAFNMYDL DGDGKITRVE MLEIIEAIYK MVGTVIMMKM NEDGLTPEQR VDKIFSKMDK NKDDQITLDE FKEAAKSDPS IVLLLQCDIQ K
Characteristics:	Human VSNL1 full-length ORF ( AAH22012, 1 a.a. - 191 a.a.) recombinant protein with GST-tag at N-terminal.
Purification:	in vitro wheat germ expression system

#### Target Details

Target:	VSNL1
---------	-------

## Target Details

Alternative Name:	VSNL1 ( <a href="#">VSNL1 Products</a> )
Background:	Full Gene Name: visinin-like 1 Synonyms: HLP3,HPCAL3,HUVISL1,VILIP,VILIP-1
Gene ID:	7447

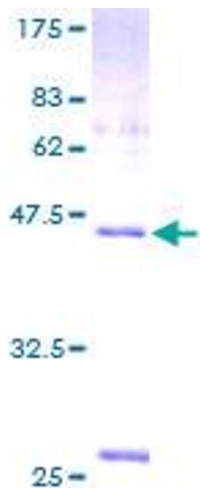
## Application Details

Application Notes:	Optimal working dilution should be determined by the investigator.
Comment:	Preparation method: in vitro, wheat germ expression system Product Quality tested by: 12.5% SDS-PAGE Stained with Coomassie Blue.
Restrictions:	For Research Use only

## Handling

Buffer:	50 mM Tris-HCl, 10 mM reduced Glutathione, pH =8.0 in the elution buffer.
Handling Advice:	Aliquot to avoid repeated freezing and thawing.
Storage:	-80 °C
Storage Comment:	Best use within three months from the date of receipt of this protein.

## Images



**Image 1.**