



[Go to Product page](#)

Datasheet for ABIN1325127

VSTM2L Protein (AA 25-204) (GST tag)

1 Image

Overview

Quantity:	10 µg
Target:	VSTM2L
Protein Characteristics:	AA 25-204
Origin:	Human
Source:	Wheat germ
Protein Type:	Recombinant
Purification tag / Conjugate:	This VSTM2L protein is labelled with GST tag.
Application:	ELISA, Western Blotting (WB), Antibody Array (AA), Affinity Purification (AP)

Product Details

Purpose:	VSTM2L (Human) Recombinant Protein (P01)
Sequence:	TRPAGHAPWD NHVSGHALFT ETPHDMTART GEDVEMACSF RGSGPSYSL EIQWWYVRSH RDWTDKQAWA SNQLKASQQE DAGKEATKIS VVKVVGSNIS HKLRLSRVKP TDEGSYECRV IDFSDGKARH HKVKAYLRVQ PGENSVLHLP EAPPAAPAPP PPKPGKELRK RSVDQEACSL
Characteristics:	Human VSTM2L full-length ORF (AAH33818.1, 25 a.a. - 204 a.a.) recombinant protein with GST-tag at N-terminal.
Purification:	in vitro wheat germ expression system

Target Details

Target:	VSTM2L
Alternative Name:	VSTM2L (VSTM2L Products)

Target Details

Background:	Full Gene Name: V-set and transmembrane domain containing 2 like Synonyms: C20orf102,dJ1118M15.2
Gene ID:	128434

Application Details

Application Notes:	Optimal working dilution should be determined by the investigator.
Comment:	Preparation method: in vitro, wheat germ expression system Product Quality tested by: 12.5% SDS-PAGE Stained with Coomassie Blue.
Restrictions:	For Research Use only

Handling

Buffer:	50 mM Tris-HCl, 10 mM reduced Glutathione, pH =8.0 in the elution buffer.
Handling Advice:	Aliquot to avoid repeated freezing and thawing.
Storage:	-80 °C
Storage Comment:	Best use within three months from the date of receipt of this protein.

Images

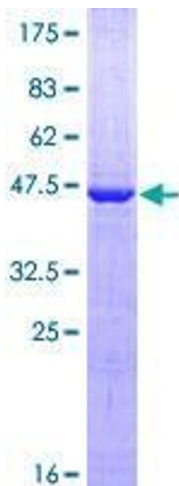


Image 1.