

Datasheet for ABIN1325138

VWA5A Protein (AA 332-415) (GST tag)



[Go to Product page](#)

1 Image

Overview

Quantity:	2 µg
Target:	VWA5A
Protein Characteristics:	AA 332-415
Origin:	Human
Source:	Wheat germ
Protein Type:	Recombinant
Purification tag / Conjugate:	This VWA5A protein is labelled with GST tag.
Application:	ELISA, Western Blotting (WB), Antibody Array (AA), Affinity Purification (AP)

Product Details

Purpose:	LOH11CR2A (Human) Recombinant Protein (Q01)
Sequence:	GSSYEACFPE SVKYTQQTME EALGRVKLMQ ADLGGTEILA PLQNIYRGPS IPGHPLQLFV FTDGEVTDTF SVIKEVRINR QKHR
Characteristics:	Human LOH11CR2A partial ORF (NP_938057, 332 a.a. - 415 a.a.) recombinant protein with GST-tag at N-terminal.
Purification:	in vitro wheat germ expression system

Target Details

Target:	VWA5A
Alternative Name:	VWA5A (VWA5A Products)

Target Details

Background:	Full Gene Name: von Willebrand factor A domain containing 5A Synonyms: BCSC-1,BCSC1,LOH11CR2A
Gene ID:	4013
NCBI Accession:	NM_198315

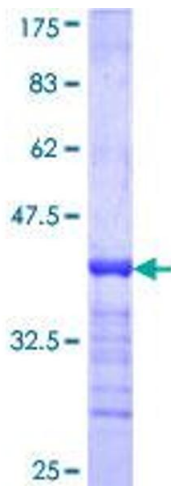
Application Details

Application Notes:	Optimal working dilution should be determined by the investigator.
Comment:	Preparation method: in vitro, wheat germ expression system Product Quality tested by: 12.5% SDS-PAGE Stained with Coomassie Blue.
Restrictions:	For Research Use only

Handling

Buffer:	50 mM Tris-HCl, 10 mM reduced Glutathione, pH =8.0 in the elution buffer.
Handling Advice:	Aliquot to avoid repeated freezing and thawing.
Storage:	-80 °C
Storage Comment:	Best use within three months from the date of receipt of this protein.

Images



SDS-PAGE

Image 1.