



Datasheet for ABIN1325142
WAPAL Protein (AA 1-402) (GST tag)



[Go to Product page](#)

1 Image

Overview

Quantity:	10 µg
Target:	WAPAL
Protein Characteristics:	AA 1-402
Origin:	Human
Source:	Wheat germ
Protein Type:	Recombinant
Purification tag / Conjugate:	This WAPAL protein is labelled with GST tag.
Application:	ELISA, Western Blotting (WB), Antibody Array (AA), Affinity Purification (AP)

Product Details

Purpose:	KIAA0261 (Human) Recombinant Protein (P01)
Sequence:	MDLDRASLDL MIRLLELEQD ASSAKLLNEK DMNKIKEKIR RLCETVHNKH LDLENITTGH LAMETLLSLT SKRAGDWFKE ELRLLGGLDH IVDKVKECVD HLSRDEDEEK LVASLWGAER CLRVLESVTV HNPENQSYLI AYKDSQLIVS SAKALQHCEE LIQQYNRAED SICLADSKPL PHQNVNTNHVG KAVEDCMRAI IGVLLNLTND NEWGSTKTGE QDGLIGTALN CVLQVPKYLP QEQRFDIRVL LFLERERAAQ LAESKTDELI KDAPTTQHDK SGEWQETSQE IQWVSTEKTD GTEEKHKKEE EDEELDLNKA LQHAGKHMED CIVASYTALL LGCLCQESPI NVTTVREYLP EGDFSIMTEM LKKFLSFMNL TCAVGTGQK SISRVIEYLE HC
Characteristics:	Human KIAA0261 full-length ORF (AAH17393, 1 a.a. - 402 a.a.) recombinant protein with GST-tag at N-terminal.
Purification:	in vitro wheat germ expression system

Target Details

Target:	WAPAL
Alternative Name:	WAPAL (WAPAL Products)
Background:	Full Gene Name: wings apart-like homolog (Drosophila) Synonyms: FOE,KIAA0261,WAPL
Gene ID:	23063
Pathways:	Chromatin Binding

Application Details

Application Notes:	Optimal working dilution should be determined by the investigator.
Comment:	Preparation method: in vitro, wheat germ expression system Product Quality tested by: 12.5% SDS-PAGE Stained with Coomassie Blue.
Restrictions:	For Research Use only

Handling

Buffer:	50 mM Tris-HCl, 10 mM reduced Glutathione, pH =8.0 in the elution buffer.
Handling Advice:	Aliquot to avoid repeated freezing and thawing.
Storage:	-80 °C
Storage Comment:	Best use within three months from the date of receipt of this protein.

Images

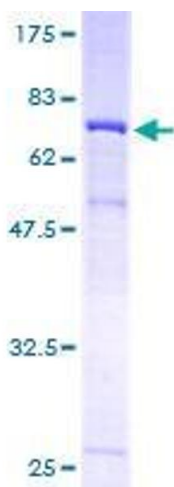


Image 1.