



[Go to Product page](#)

Datasheet for ABIN1325158

WASF2 Protein (AA 1-498) (GST tag)

1 Image

Overview

Quantity:	10 µg
Target:	WASF2
Protein Characteristics:	AA 1-498
Origin:	Human
Source:	Wheat germ
Protein Type:	Recombinant
Purification tag / Conjugate:	This WASF2 protein is labelled with GST tag.
Application:	Western Blotting (WB), ELISA, Antibody Array (AA), Affinity Purification (AP)

Product Details

Purpose:	WASF2 (Human) Recombinant Protein (P01)
Sequence:	MPLVTRNIEP RHLCRQTLPS VRSELECVTN ITLANVIRQL GSLSKYAEDI FGELFTQANT FASRVSSLAE RVDRLQVKVT QLDPKKEEVS LQGINTRKAF RSSTIQDQKL FDRNSLPVPV LETYNTCDTP PPLNNLTPYR DDGKEALKFY TDPSYFFDLW KEKMLQDTKD IMKEKRKHRK EKKDNPNRGN VNPRKIKTRK EEWKMKMGQ EFVESKEKLG TSGYPPTLVY QNGSIGCVEN VDASSYPPPP QSDSASSPSP SFSEDNLPPP PAEFSYPVDN QRGSLAGPK RSSVVSHP PPAPPLGSP GPKPGFAPPP APPPPPPMI GIPPPPPVVG FGSPGTPPPP SPPSFPPHPD FAAPPPPPP PAADYPTLPP PPLSQPTGGA PPPPPPPPP GPPPPPTGA DGQPAIPPL SDTTKPKSSL PAVSDARSDL LSAIRQGFQL RRVEEQREQE KRDRVVGNDA TILSRRIAVE YDSEDDSSSE FDEDDWSD
Characteristics:	Human WASF2 full-length ORF (NP_008921.1, 1 a.a. - 498 a.a.) recombinant protein with GST-tag at N-terminal.

Product Details

Purification: in vitro wheat germ expression system

Target Details

Target: WASF2

Alternative Name: WASF2 ([WASF2 Products](#))

Background: Full Gene Name: WAS protein family, member 2
Synonyms: SCAR2,WAVE2,dJ393P12.2

Gene ID: 10163

NCBI Accession: [NM_006990](#)

Pathways: [RTK Signaling](#)

Application Details

Application Notes: Optimal working dilution should be determined by the investigator.

Comment: Preparation method: in vitro, wheat germ expression system
Product Quality tested by: 12.5% SDS-PAGE Stained with Coomassie Blue.

Restrictions: For Research Use only

Handling

Buffer: 50 mM Tris-HCl, 10 mM reduced Glutathione, pH =8.0 in the elution buffer.

Handling Advice: Aliquot to avoid repeated freezing and thawing.

Storage: -80 °C

Storage Comment: Best use within three months from the date of receipt of this protein.

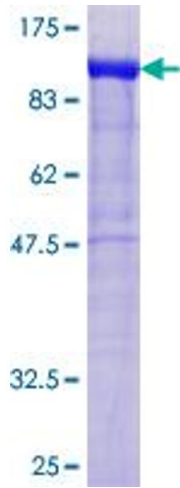


Image 1.