



[Go to Product page](#)

Datasheet for ABIN1325160

WASF2 Protein (AA 73-172) (GST tag)

1 Image

Overview

Quantity:	10 µg
Target:	WASF2
Protein Characteristics:	AA 73-172
Origin:	Human
Source:	Wheat germ
Protein Type:	Recombinant
Purification tag / Conjugate:	This WASF2 protein is labelled with GST tag.
Application:	Western Blotting (WB), ELISA, Antibody Array (AA), Affinity Purification (AP)

Product Details

Purpose:	WASF2 (Human) Recombinant Protein (Q01)
Sequence:	DRLQVKVTVL DPKEEEVSLQ GINTRKAFRS STIQDQKLFV RNSLPVPVLE TYNTCDTPPP LNNLTPYRDD GKEALKFYTD PSYFFDLWKE KMLQDTKDIM
Characteristics:	Human WASF2 partial ORF (NP_008921, 73 a.a. - 172 a.a.) recombinant protein with GST-tag at N-terminal.
Purification:	in vitro wheat germ expression system

Target Details

Target:	WASF2
Alternative Name:	WASF2 (WASF2 Products)

Target Details

Background: Full Gene Name: WAS protein family, member 2
Synonyms: SCAR2,WAVE2,dJ393P12.2

Gene ID: 10163

NCBI Accession: [NM_006990](#)

Pathways: [RTK Signaling](#)

Application Details

Application Notes: Optimal working dilution should be determined by the investigator.

Comment: Preparation method: in vitro, wheat germ expression system
Product Quality tested by: 12.5% SDS-PAGE Stained with Coomassie Blue.

Restrictions: For Research Use only

Handling

Buffer: 50 mM Tris-HCl, 10 mM reduced Glutathione, pH =8.0 in the elution buffer.

Handling Advice: Aliquot to avoid repeated freezing and thawing.

Storage: -80 °C

Storage Comment: Best use within three months from the date of receipt of this protein.

Images

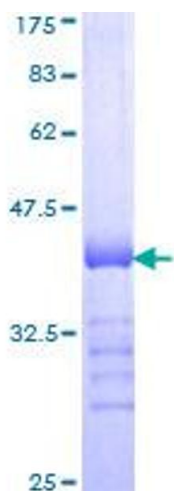


Image 1.