

Datasheet for ABIN1325163

Neural Wiskott-Aldrich syndrome protein (WASL) (AA 1-505) protein (GST tag)



[Go to Product page](#)

1 Image

Overview

Quantity:	10 µg
Target:	Neural Wiskott-Aldrich syndrome protein (WASL)
Protein Characteristics:	AA 1-505
Origin:	Human
Source:	Wheat germ
Protein Type:	Recombinant
Purification tag / Conjugate:	GST tag
Application:	ELISA, Western Blotting (WB), Antibody Array (AA), Affinity Purification (AP)

Product Details

Purpose:	WASL (Human) Recombinant Protein (P01)
Sequence:	MSSVQQQPPP PRRVTNVGSL LLTPQENESL FTFLGKKCVT MSSAVVQLYA ADRNCMWSKK CSGVAQLVKD NPQRSYFLRI FDIKDGKLLW EQELYNNFVY NSPRGYFHTE AGDTCQVALN FANEEEAKKF RKAFTDLLGR RQRKSEKRRD PPNGPNLPMA TVDIKNPEIT TNRFYGPQVN NISHTKEKKK GKAKKKRLTK ADIGTPSNFQ HIGHVGWDPN TGFDLNLLDP ELKNLDFDMCG ISEAQLKDRE TSKVIYDFIE KTGGEAVKN ELRRQAPPPP PPSRGGPPPP PPPPHNSGPP PPPARGRGAP PPPPSRAPTA APPPPPPSRP SVAVPPPPPN RMYPPPPPAL PSSAPSGPPP PPPSVLGVGP VAPPPPPPPP PPPGPPPPPG LPSDGDHQVP TTAGNKAALL DQIREGAQLK KVEQNSRPVS CSGRDALLDQ IRQGIQLKSV ADGQESTPPT PAPTSGIVGA LMEVMQKRSK AIHSSDEDED EDDEEDFEDD DEWED
Characteristics:	Human WASL full-length ORF (NP_003932.3, 1 a.a. - 505 a.a.) recombinant protein with GST-tag at N-terminal.

Product Details

Purification: in vitro wheat germ expression system

Target Details

Target: Neural Wiskott-Aldrich syndrome protein (WASL)

Alternative Name: WASL ([WASL Products](#))

Background: Full Gene Name: Wiskott-Aldrich syndrome-like
Synonyms: DKFZp779G0847,MGC48327,N-WASP,NWASP

Gene ID: 8976

NCBI Accession: [NM_003941](#)

Application Details

Application Notes: Optimal working dilution should be determined by the investigator.

Comment: Preparation method: in vitro, wheat germ expression system
Product Quality tested by: 12.5% SDS-PAGE Stained with Coomassie Blue.

Restrictions: For Research Use only

Handling

Buffer: 50 mM Tris-HCl, 10 mM reduced Glutathione, pH =8.0 in the elution buffer.

Handling Advice: Aliquot to avoid repeated freezing and thawing.

Storage: -80 °C

Storage Comment: Best use within three months from the date of receipt of this protein.

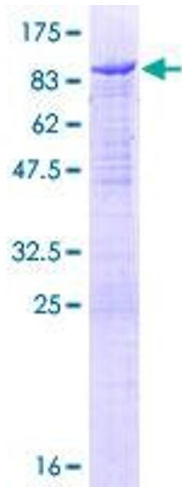


Image 1.